

For Lease

101 Milledge Road, Bldg 1
Greenville, SC



Industrial Building Available Donaldson Center Industrial Park (SCTAC)

- ±98,200 SF
- Ceiling Height 25' at eaves
- Column Spacing 57'x33' | 69'x33' (center bay)
- (2) Drive-in Doors
- (12) Dock High Doors
- ESFR Sprinkler System
- Power: 800 AMP, 3 Phase, 4 Wire, 277/480V
- ±1 Acre Lay Down Yard
- Zoning - Industrial - I
- \$6.25 / SF / NNN (Estimated NNNs @ \$1.70/SF)



The information contained herein is deemed reliable but is not guaranteed. NAI Earle Furman makes no warranties or representations regarding the accuracy, completeness, or reliability of the information. All parties are encouraged to independently verify all details, including but not limited to property condition, terms, and financial projections. Prices, terms, and availability are subject to change without notice.

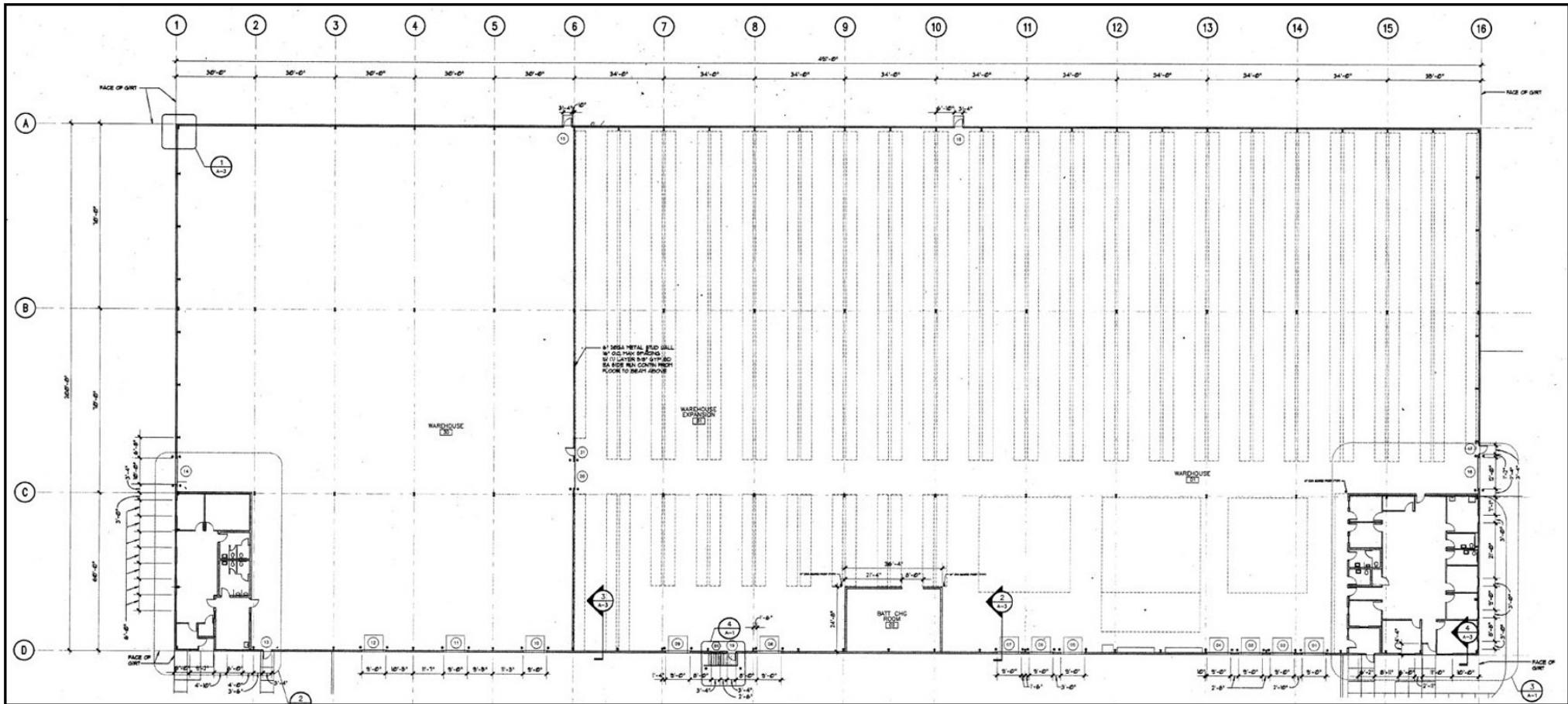
John Baldwin, IV, CCIM
864-238-6336
JohnBaldwin@naief.com

Harry Gaddy
843-801-9299
hgaddy@naief.com

NAI Earle Furman

Floorplan

101 Milledge Road, Bldg 1
Greenville, SC



The information contained herein is deemed reliable but is not guaranteed. NAI Earle Furman makes no warranties or representations regarding the accuracy, completeness, or reliability of the information. All parties are encouraged to independently verify all details, including but not limited to property condition, terms, and financial projections. Prices, terms, and availability are subject to change without notice.

John Baldwin, IV, CCIM
864-238-6336
JohnBaldwin@naief.com

Harry Gaddy
843-801-9299
hgaddy@naief.com

NAI Earle Furman

For Lease

101 Milledge Road, Bldg 1
Greenville, SC

Location Overview

Strategically located in Greenville's Donaldson Center Industrial Park (SCTAC), 101 Milledge has a logistical advantage, just ± 1.5 miles from I-185 providing access to I-85. Keep your products moving and connect to the Upstate and major cities in Southeast from this ideally situated facility. This is the ultimate location to establish or expand manufacturing and distribution businesses, in a fast-growing commerce region with an educated, diverse workforce.



The information contained herein is deemed reliable but is not guaranteed. NAI Earle Furman makes no warranties or representations regarding the accuracy, completeness, or reliability of the information. All parties are encouraged to independently verify all details, including but not limited to property condition, terms, and financial projections. Prices, terms, and availability are subject to change without notice.

John Baldwin, IV, CCIM
864-238-6336
JohnBaldwin@naief.com

Harry Gaddy
843-801-9299
hgaddy@naief.com

NAI Earle Furman