

# Up to $\pm 60,000$ SF Available

$\pm 20,000$  to  $\pm 60,000$  SF

200 Ben Hamby Drive  
Greenville, SC 29615  
Site #2516

Contact Broker for Pricing



## Contact Us

**Marcus Cornelius, SIOR**  
Senior Vice President  
+1 864 527 6081  
[marcus.corelius@cbre.com](mailto:marcus.corelius@cbre.com)

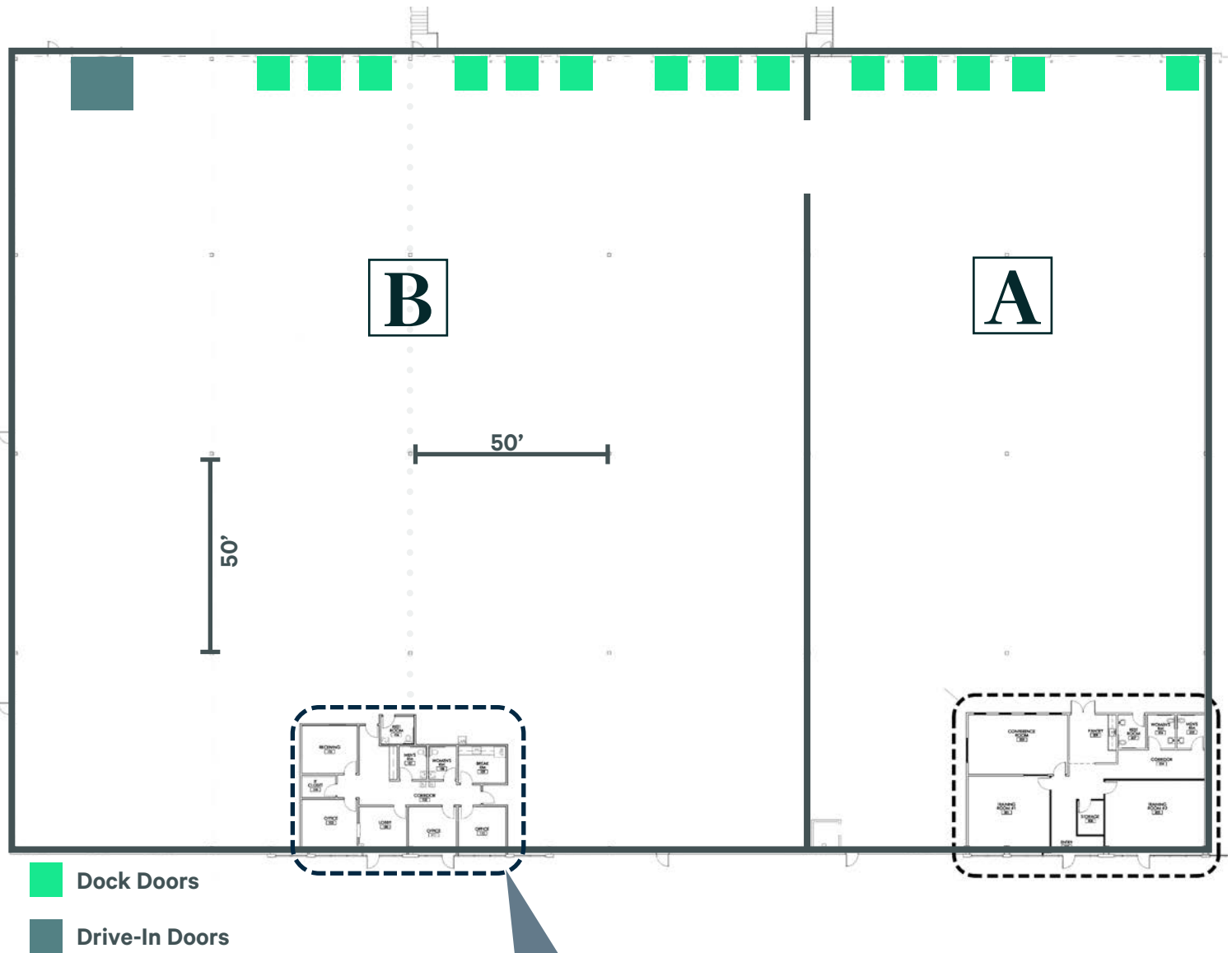
**Campbell Lewis, SIOR**  
Senior Vice President  
+1 864 527 6041  
[campbell.lewis@cbre.com](mailto:campbell.lewis@cbre.com)



## Property Details

- + Available Space: ±60,000 SF
- + Building Size: 110,000 SF
- + Minimum Divisibility: 20,000 SF
- + Building Depth: 200'
- + Year Built: 2015
- + Column Spacing: 50' x 50'
- + Clear Height: 28'
- + Dock Doors: 14
- + Edge of Docks: 7
- + Mechanical Levelers: 1
- + Drive-In Doors: 1
- + Utilities:
  - Piedmont Natural Gas
  - Duke Energy
  - Greenville Water System





## Option A:

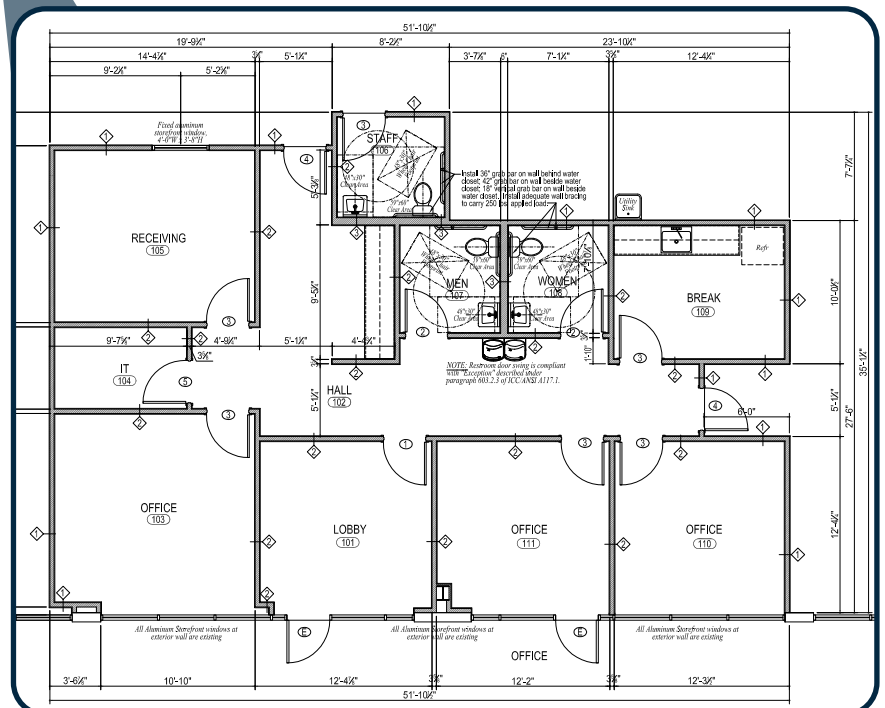
- + Available Space: ±20,000 SF
- + Dock Doors: 5

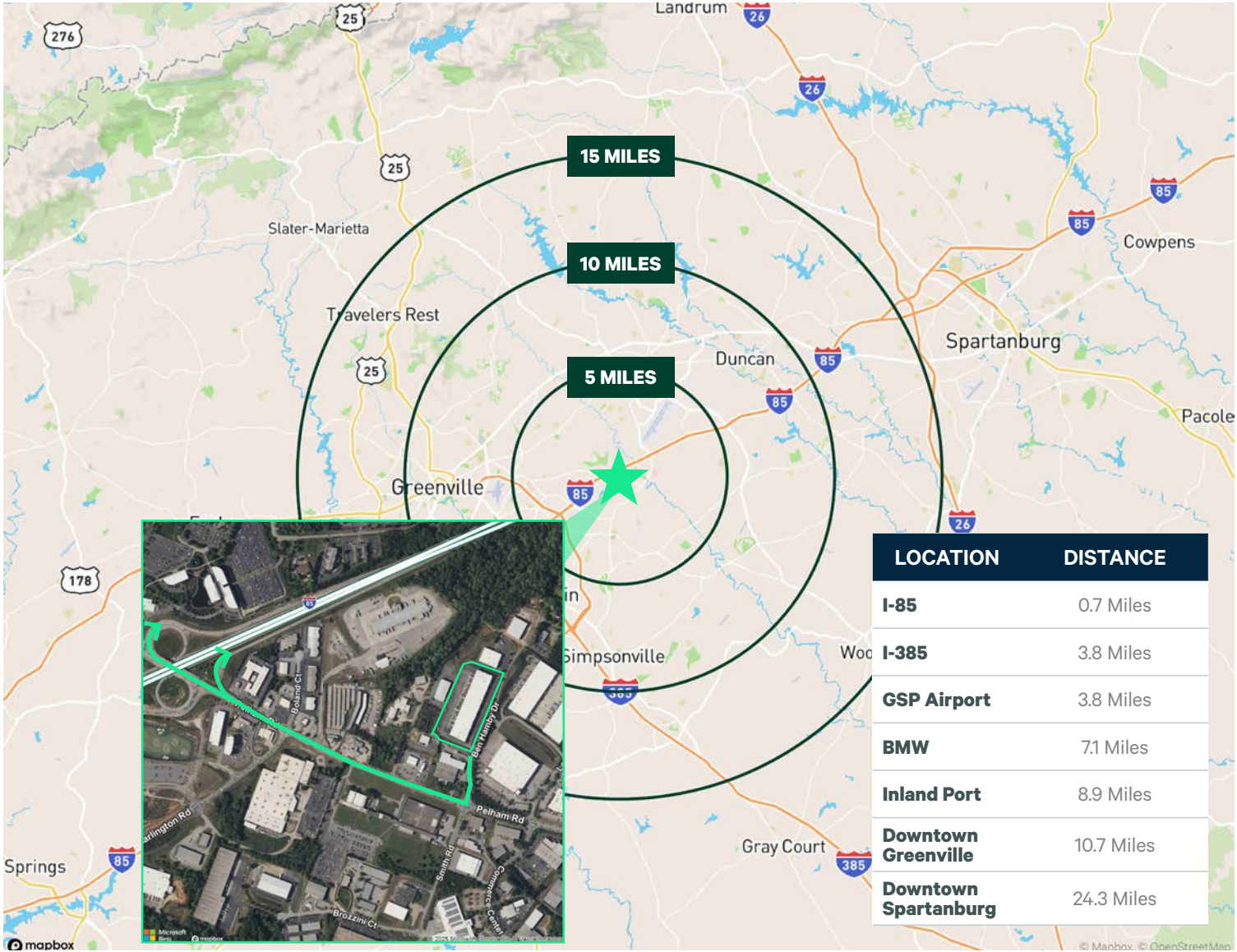
## Option B:

- + Available Space: ±40,000 SF
- + Dock Doors: 9
- + Drive in Doors: 1

## Full Suite (A+B):

- + Available Space: ±60,000 SF
- + Dock Doors: 14
- + Drive-In Doors: 1





	POPULATION	DAYTIME POPULATION	BUSINESSES	BACHELOR'S DEGREE OR HIGHER	LABOR FORCE	AVERAGE HH INCOME
5 MILES	130,606	167,955	5,604	31,388	66,709	\$124,706
10 MILES	423,371	493,633	18,500	85,286	218,623	\$109,249
15 MILES	665,853	701,875	24,211	116,486	335,750	\$102,974

© 2025 CBRE, Inc. All rights reserved. This information has been obtained from sources believed reliable, but has not been verified for accuracy or completeness. You should conduct a careful, independent investigation of the property and verify all information. Any reliance on this information is solely at your own risk. CBRE and the CBRE logo are service marks of CBRE, Inc. All other marks displayed on this document are the property of their respective owners, and the use of such logos does not imply any affiliation with or endorsement of CBRE. Photos herein are the property of their respective owners. Use of these images without the express written consent of the owner is prohibited.