

# FOR LEASE

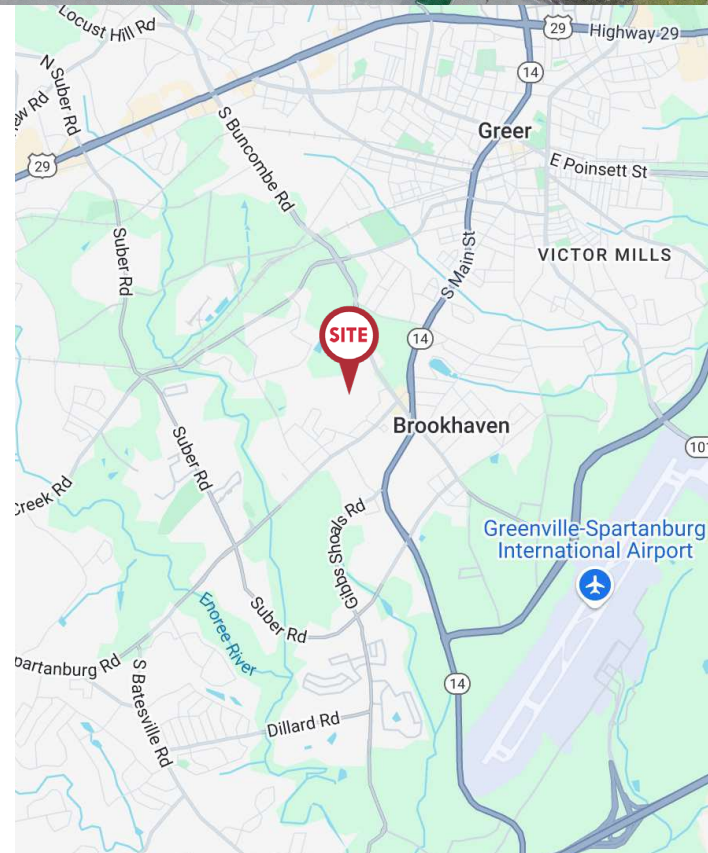
149 Metro Court | Greer, SC 29650

## \$7.25/SF NNN



### UNIT B | ±26,542 SF WAREHOUSE SPACE

- Includes ±1,878 SF office space
- 18' to 25' ceiling heights
- 28'2" x 50' column spacing
- 4 dock doors
- LED lighting
- Metro Court is a STAG professionally managed park
- Situated in the heart of Upstate SC's thriving industrial corridor among major manufacturers, suppliers & logistics companies
- Close proximity to major transportation hubs (I-85, US-29, Hwy 14, and Hwy 101), GSP International Airport & the Inland Port Greer
- Greer and the broader Upstate SC region offer a strong labor pool with experience in manufacturing and distribution
- Property zoned I-1, Greenville County



Contact Broker for  
Additional Information



**NA Earle Furman**

101 E. Washington Street, Ste 400  
Greenville, South Carolina 29601  
www.naiearlefurman.com

Grice Hunt, SIOR  
864.678.5935  
grice@naief.com

Clay Williams, SIOR  
864.678.5938  
clay@naief.com

Will Coker  
864.680.0526  
wcoker@naief.com

ALL INFORMATION CONTAINED  
HEREIN IS FROM SOURCES  
DEEMED RELIABLE. HOWEVER, NO  
REPRESENTATION OR WARRANTY IS  
MADE TO THE ACCURACY THEREOF.

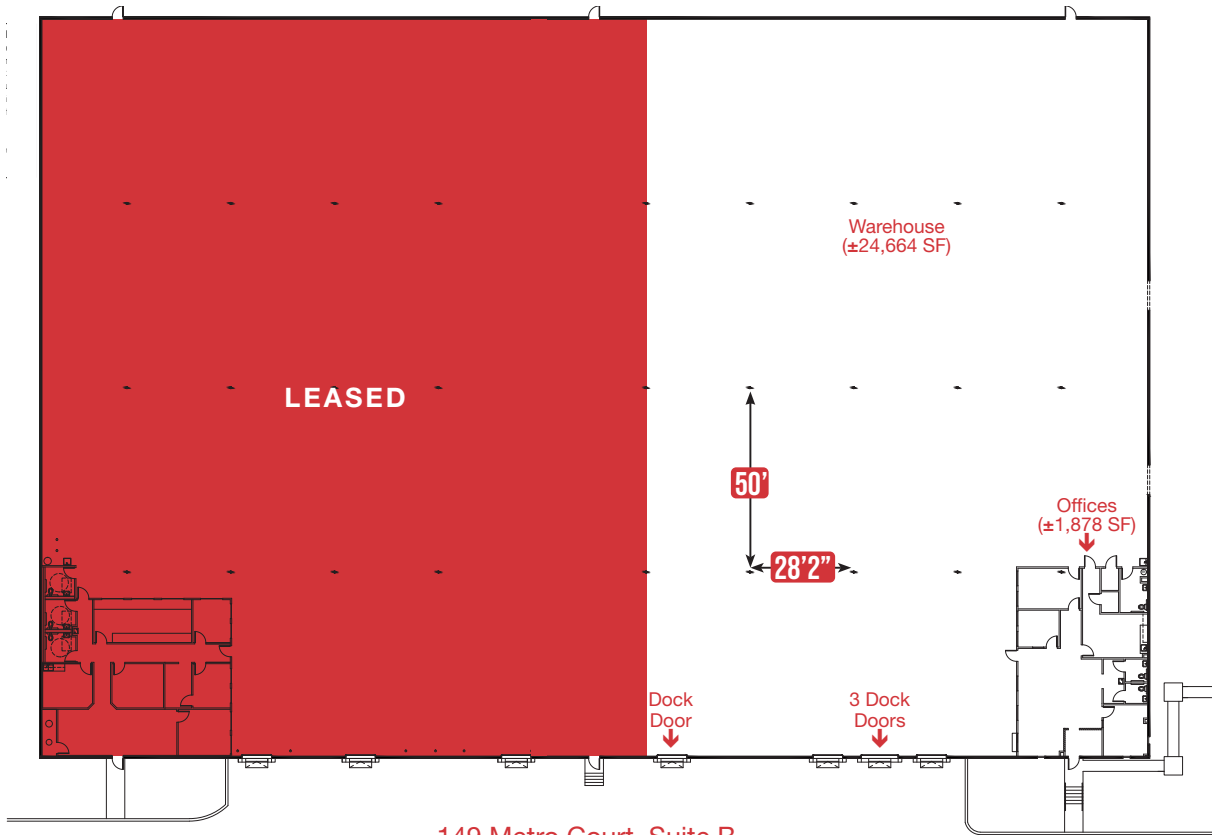


# FOR LEASE

149 Metro Court | Greer, SC 29650

MANAGED BY

**STAG**  
INDUSTRIAL



149 Metro Court, Suite B

±26,542 Total SF Available

Floor plan is for general reference and representation of the space layout only. We recommend verifying the dimensions and layout on-site.



**NA Earle Furman**

101 E. Washington Street, Ste 400  
Greenville, South Carolina 29601



www.naearlefurman.com

Grice Hunt, SIOR  
864.678.5935  
grice@naief.com

Clay Williams, SIOR  
864.678.5938  
clay@naief.com

Will Coker  
864.680.0526  
wcoker@naief.com

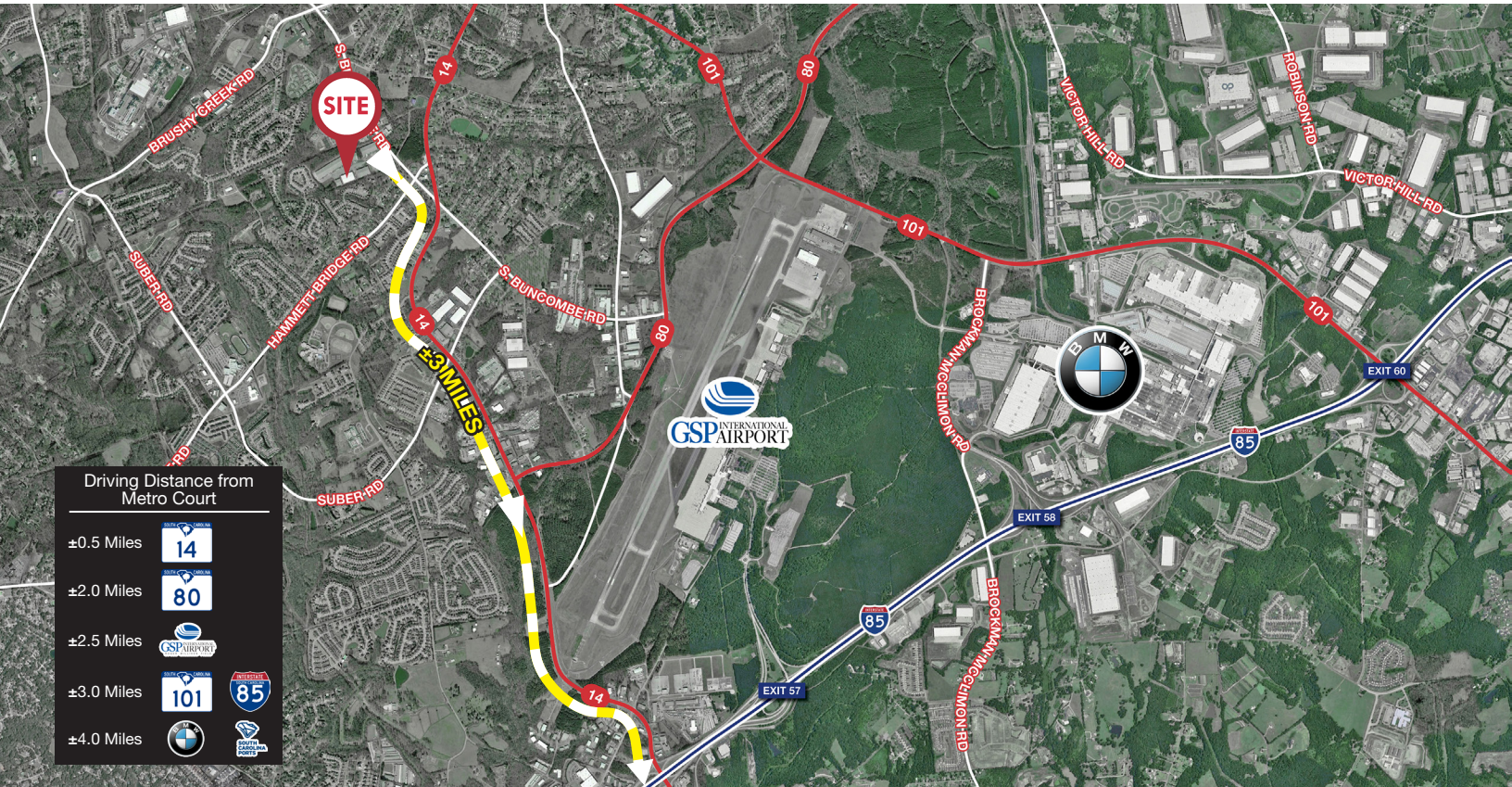
ALL INFORMATION CONTAINED  
HEREIN IS FROM SOURCES  
DEEMED RELIABLE. HOWEVER, NO  
REPRESENTATION OR WARRANTY IS  
MADE TO THE ACCURACY THEREOF.



149 Metro Court | Greer, SC 29650

The logo for STAG INDUSTRIAL, featuring the word "STAG" in large, bold, black capital letters with a stylized stag head integrated into the letter "A", and the word "INDUSTRIAL" in smaller, black capital letters below it.

An aerial photograph of the Metro Court Business Park. The park contains several large, rectangular industrial buildings with grey roofs. A central paved area is labeled 'METRO COURT'. To the left, a road is labeled 'S. BUNCOMBE RD'. A red pin with the word 'SITE' in white capital letters is placed on one of the buildings. The surrounding area includes green trees and a residential neighborhood with houses and streets visible in the upper portion of the image.



**NAI** Earle Furman

101 E. Washington Street, Ste 400  
Greenville, South Carolina 29601  
[www.naiearlefurman.com](http://www.naiearlefurman.com)

**Clay Williams, SIOR**  
864.678.5938  
clay@naief.com

**Will Coker**  
864.680.0526  
wcoker@naief.com

ALL INFORMATION CONTAINED  
HEREIN IS FROM SOURCES  
DEEMED RELIABLE. HOWEVER, NO  
REPRESENTATION OR WARRANTY IS  
MADE TO THE ACCURACY THEREOF.