



TRADE **BRIDGE**
— BUSINESS PARK

FOR LEASE
±75,500 SF Class A Multi-Tenant
Industrial Building Situated on 5.90 Acres

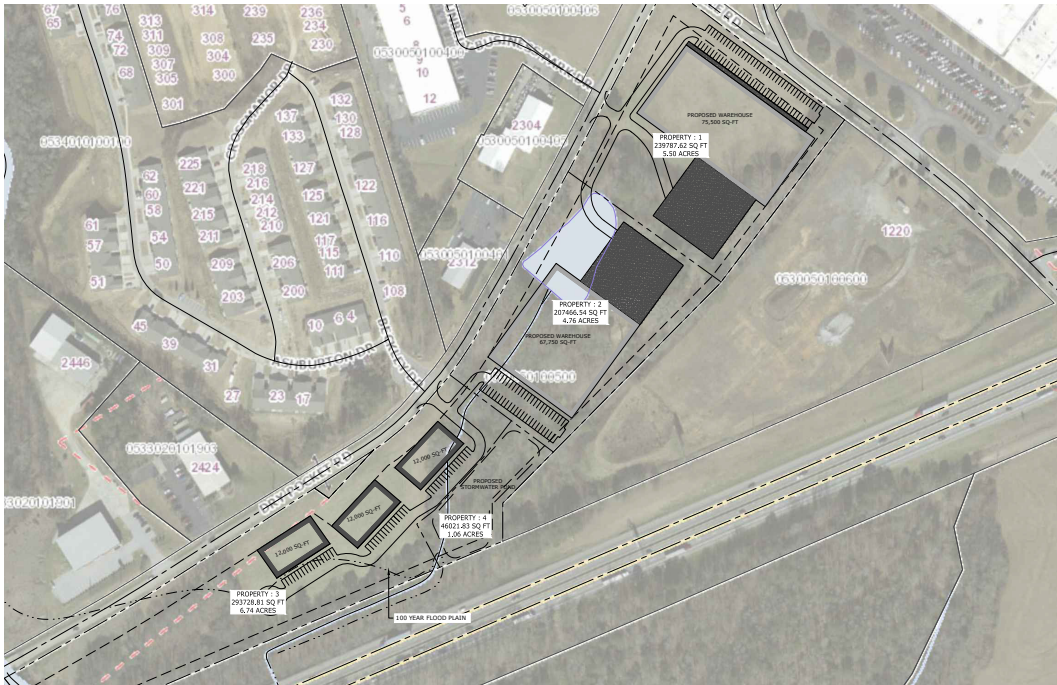


2311 Dry Pocket Road, Greer, SC



LEE &
ASSOCIATES

2311 Dry Pocket Road, Greer, SC



Building SF	±75,500 SF
Spec Office	±2,124 SF
Clear Height	32'
Column Spacing	2 - 35'6" x 50' 6 - 51' x 50'
Dimensions	377' x 200'
Load Type	Rear Load
Bay Size	2 - ±7,100 SF 6 - ±10,200 SF
Docks	7
Dock Doors	9' x 10'
Lighting	LED Motion Sensored
Sprinkler System	ESFR
Roof	TPO 60 mil.
Truck Court	140'
Loading Dock Apron	53'
Auto Parking	
Trailer Parking	12
Power	Duke Energy
Sewer	Metro Connects
Water	Greenville Water
Gas	Piedmont Natural Gas



location.





TRADE **BRIDGE**
— BUSINESS PARK



201 W. McBee Ave, Suite 400
Greenville, SC 29601

864.704.1040



320 East Main Street, Suite 430
Spartanburg, SC 29302

LeeUpstate.com



Randall Bentley, SIOR, CCIM
President/ Managing Principal
864.444.2842
rbentley@lee-associates.com



Kevin Bentley, SIOR
EVP/Principal
864.444.1196
kbentley@lee-associates.com



Jordan Skellie, SIOR
EVP/Principal
864.238.2188
jskellie@lee-associates.com



Andrew Harrill, CCIM
Senior Vice President
864.607.7223
aharrill@lee-associates.com