

45 KITTY HAWK RD

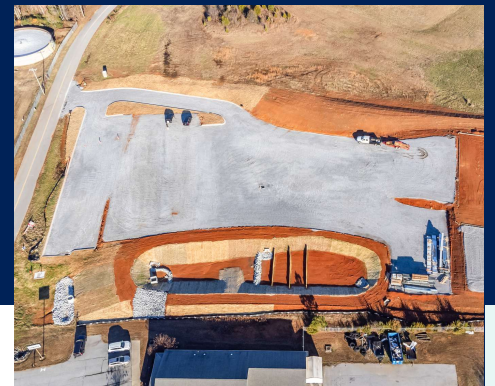
GREENVILLE, SC 29605

Under construction industrial facility set to be completed in Q2 2024

- 10,000 SF Flex Space
- 24' Clear Height
- 2 docks, 2 drive-ins
- Fully sprinkled
- Ample parking
- Extra laydown available
- Room on site to build an additional \pm 14,000 SF



FOR LEASE
CONTACT BROKER FOR LEASE RATE



CONTACT

WALT ROBINSON, CCIM, SIOR

864.616.1035

wrobinson@trinity-partners.com

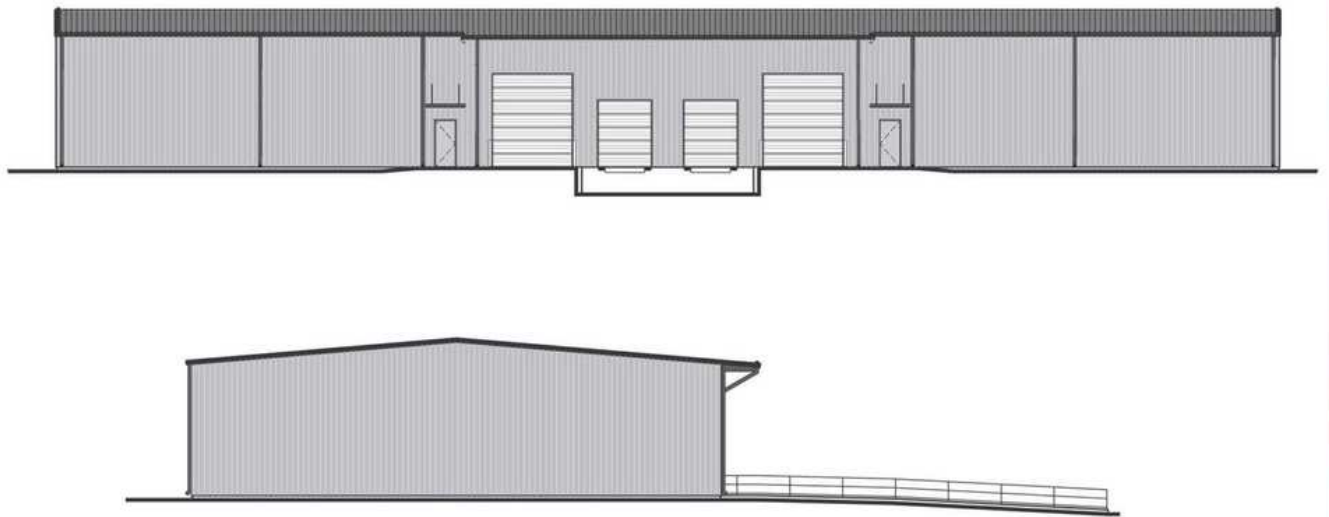
CHISOLM NICHOLSON, CCIM, SIOR

864.270.8419

cnicholson@trinity-partners.com

45 KITTY HAWK RD

GREENVILLE, SC 29605



CONTACT

WALT ROBINSON, CCIM, SIOR
864.616.1035
wrobinson@trinity-partners.com

CHISOLM NICHOLSON, CCIM, SIOR
864.270.8419
cnicholson@trinity-partners.com

45 KITTY HAWK RD

GREENVILLE, SC 29605



Map data ©2024 Google Imagery ©2024 Airbus, CNES / Airbus, City of Greenville GIS, Landsat / Copernicus, Maxar Technologies, U.S. Geological Survey, USDA/FPAC/GEO

CONTACT

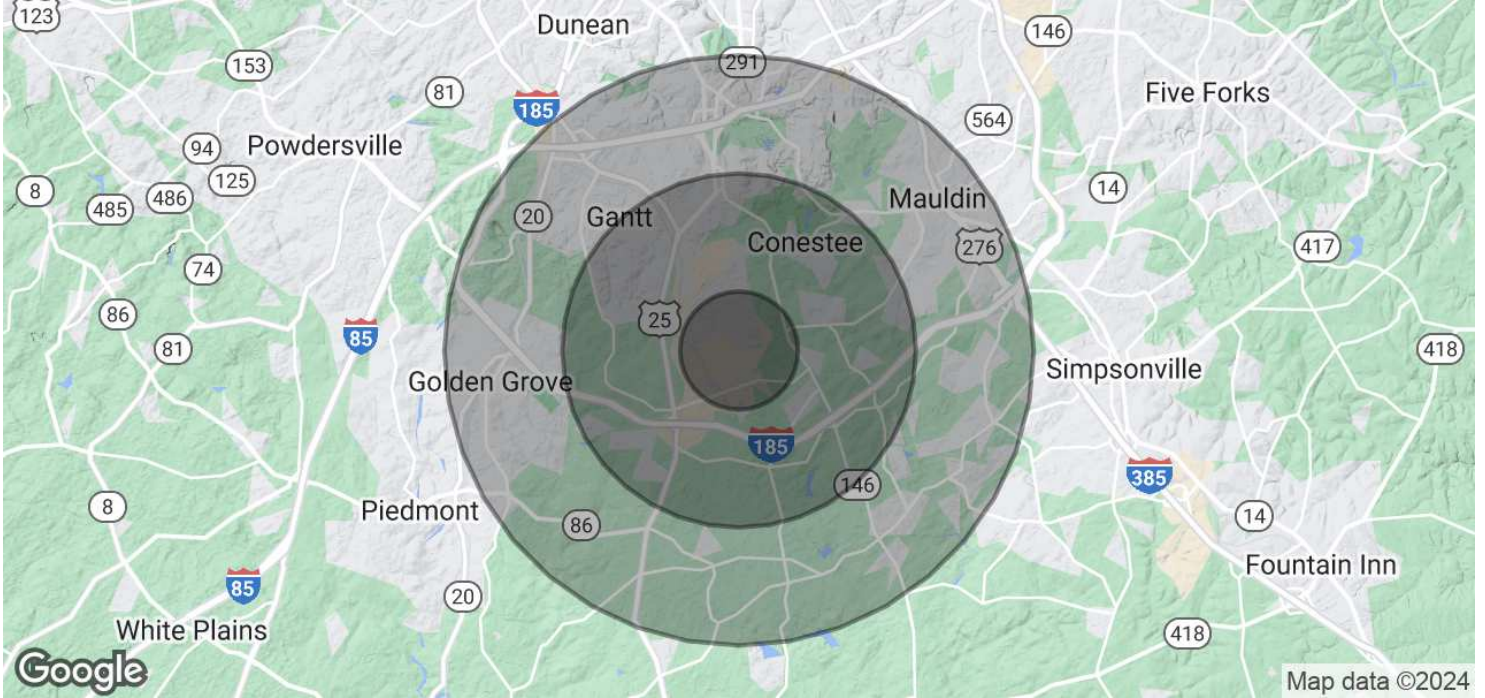
WALT ROBINSON, CCIM, SIOR
864.616.1035
wrobinson@trinity-partners.com

CHISOLM NICHOLSON, CCIM, SIOR
864.270.8419
cnicholson@trinity-partners.com

45 KITTY HAWK RD

GREENVILLE, SC 29605

FOR LEASE
CONTACT BROKER FOR LEASE RATE



POPULATION	1 MILE	3 MILES	5 MILES
Total Population	603	22,054	66,583
Average Age	41.0	36.9	37.6
Average Age (Male)	42.5	36.8	36.0
Average Age (Female)	40.2	38.1	38.8

HOUSEHOLDS & INCOME	1 MILE	3 MILES	5 MILES
Total Households	288	8,318	26,491
# of Persons per HH	2.1	2.7	2.5
Average HH Income	\$52,864	\$62,992	\$71,793
Average House Value	\$111,775	\$150,291	\$172,167

* Demographic data derived from 2020 ACS - US Census

CONTACT

WALT ROBINSON, CCIM, SIOR
864.616.1035
wrobinson@trinity-partners.com

CHISOLM NICHOLSON, CCIM, SIOR
864.270.8419
cnicholson@trinity-partners.com