



±445 SF OF CLASS A OFFICE SPACE FOR SUBLEASE IN DOWNTOWN GREENVILLE

201 W McBee Avenue, 4th Floor
Greenville, SC

Lease Rate:
\$1,250.00
Monthly
Full Service
+ Parking Fee

- Newly Renovated Space
- Large Open Office Area
- Located in the Prominent County Bank Building
- Fully Furnished



LEE & ASSOCIATES
COMMERCIAL REAL ESTATE SERVICES

Darath Mackie
Vice President
dmackie@lee-associates.com

Randall Bentley, SIOR, CCIM
President/Principal
rbentley@lee-associates.com

864.704.1040
LeeGreenville.com



PARKING
CONVENIENT
ONSITE PARKING



DOWNTOWN ACCESS
WALKING DISTANCE
TO MAIN ST. IN
DOWNTOWN



SECURITY
KEY FOB ENTRY
TO UNIT



RENOVATED
RECENTLY
RENOVATED IN 2023

PROPERTY OVERVIEW

PROPERTY NAME	County Bank Building
TYPE	Office
TOTAL BUILDING SF	52,400 SF
TOTAL AVAILABLE SF	445 SF
SUITES AVAILABLE	1
TAX MAP #	TM0058000100800
CITY LIMITS	Yes, Greenville
ZONING	MX-D
YEAR BUILT	1980 Renovated 2023
CONSTRUCTION TYPE	Masonry
SIGNAGE	Directory Signage Available
PARKING	Onsite Parking
RESTROOMS	Yes, Common
UTILITIES	Yes
SUBMARKET	CBD
# OF OFFICES	1

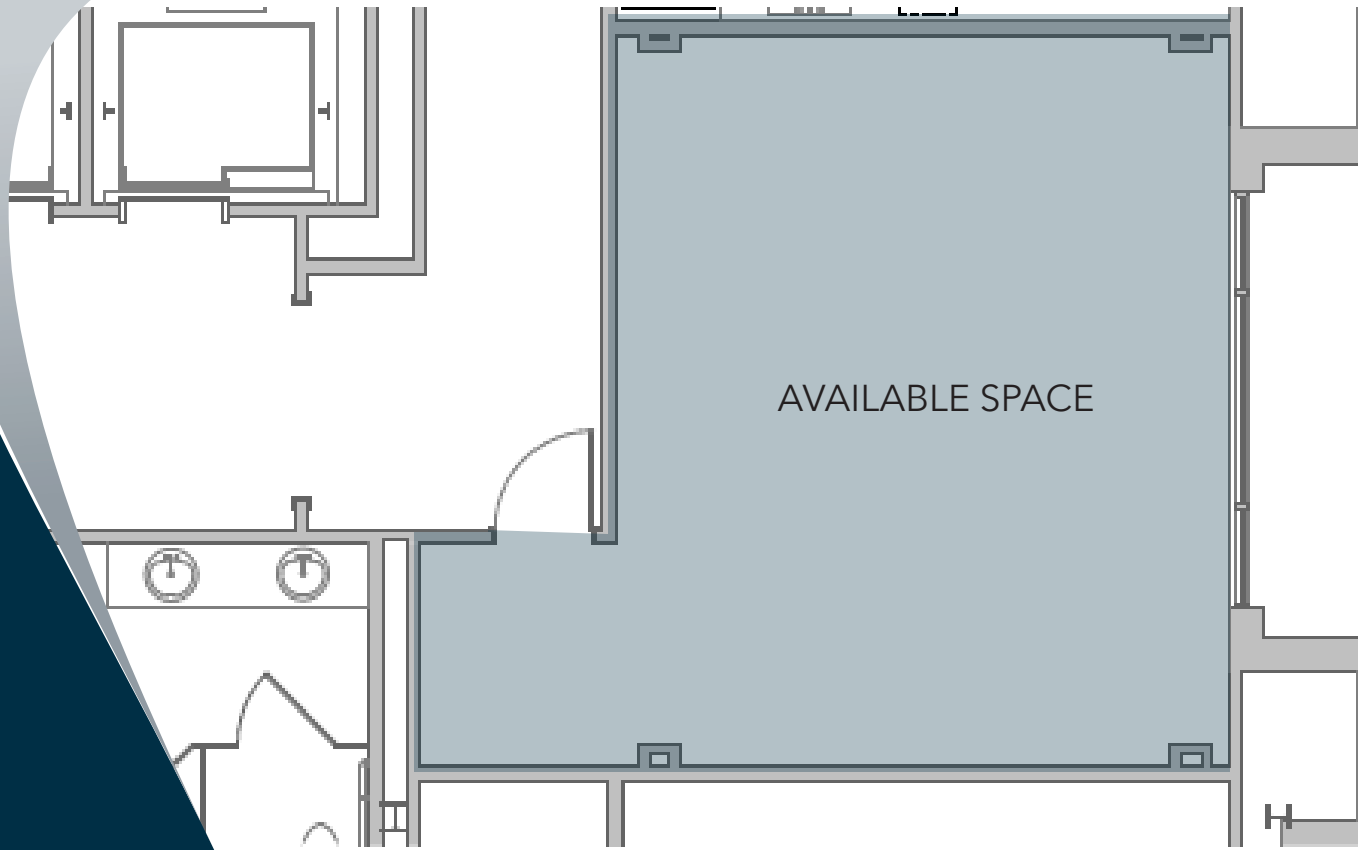


LOCATION OVERVIEW

- 1 Falls Park
- 2 Main Street
- 3 Peace Center
- 4 Poinsett Hotel



201 W. McBee Ave, Suite 100, Greenville, SC 29601
320 E. Main Street, Suite 430, Spartanburg, SC 29302
LeeGreenville.com | 864.704.1040



LEARN MORE GIVE US A CALL



LEE & ASSOCIATES
COMMERCIAL REAL ESTATE SERVICES

864.704.1040
LeeGreenville.com

GREENVILLE OFFICE
201 W. McBee Ave, Suite 400
Greenville, SC 29601

SPARTANBURG OFFICE
320 E. Main Street, Suite 430
Spartanburg, SC 29302

All information furnished regarding the properties and information in this packet is from sources deemed reliable, but no warranty or representation is made to the accuracy thereof and same is submitted to errors, omissions, change of price, rental or other conditions prior to sale, lease or financing or withdrawal without notice. No liability of any kind is to be imposed on the broker herein.



Darath Mackie
Vice President
864.337.1543
dmackie@lee-associates.com



Randall Bentley, SIOR, CCIM
President/ Managing Principal
864.444.2842
rbentley@lee-associates.com