

# FOR SUBLEASE



## 12 Distribution Court Greer, SC



± 10,000 SF  
\$12.00/SF FS

JENNIFER COOTS  
Senior Associate  
(704) 777-1745  
[Jennifer.Coots@cushwake.com](mailto:Jennifer.Coots@cushwake.com)



# PROPERTY FEATURES

- 2,000 SF of Office Space, 4 Total
- Open Work and Conference Areas
- 2 Bathrooms
- 8,000 SF of Heated Warehouse Space
- 2 Dock Doors and 2 Drive-ins
- 14' Clear Ceiling Height
- Fenced Truck Court



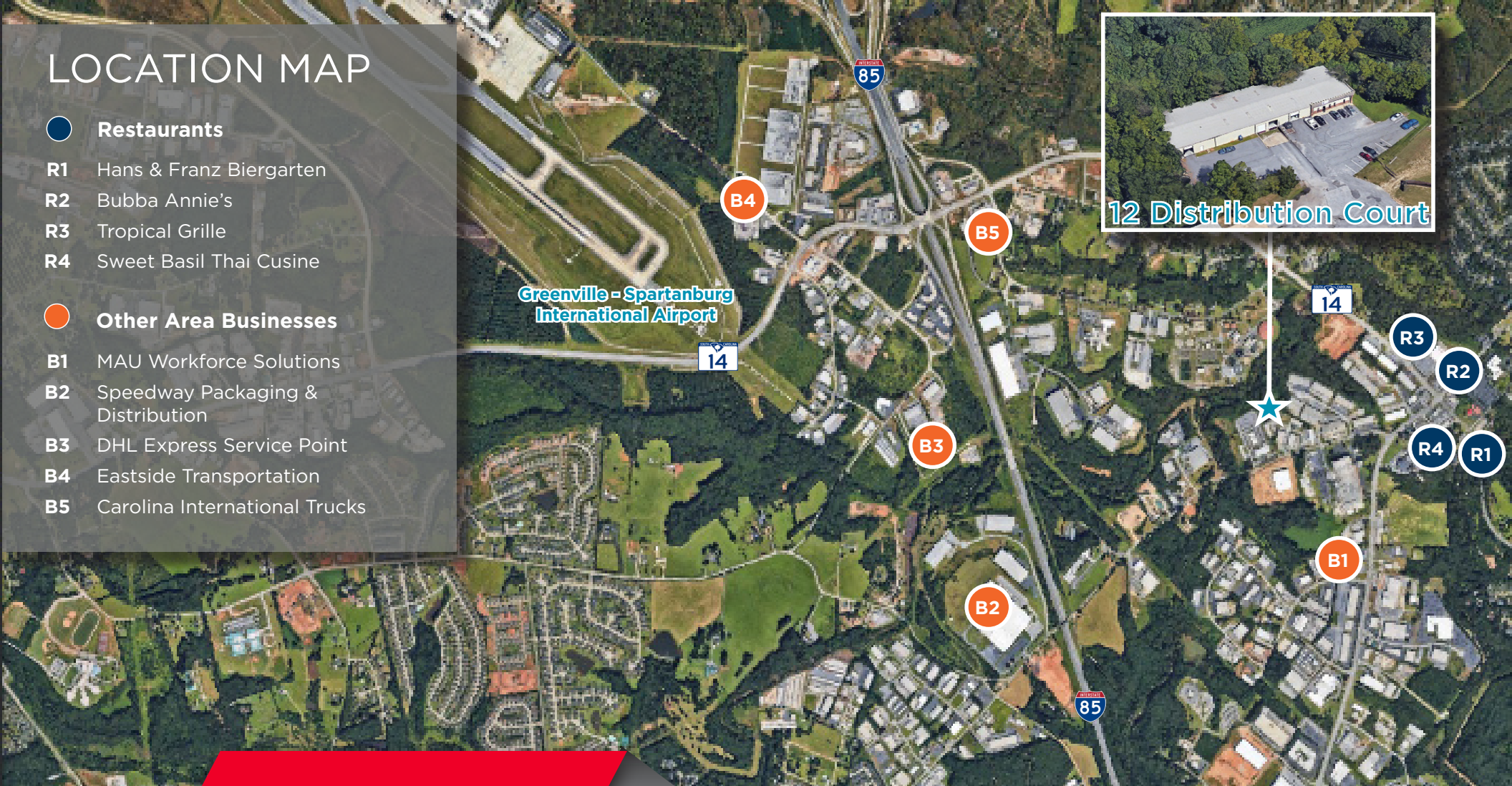
# LOCATION MAP

## ● Restaurants

- R1 Hans & Franz Biergarten
- R2 Bubba Annie's
- R3 Tropical Grille
- R4 Sweet Basil Thai Cuisine

## ● Other Area Businesses

- B1 MAU Workforce Solutions
- B2 Speedway Packaging & Distribution
- B3 DHL Express Service Point
- B4 Eastside Transportation
- B5 Carolina International Trucks



JENNIFER COOTS  
Senior Associate  
(704) 777-1745  
[Jennifer.Coots@cushwake.com](mailto:Jennifer.Coots@cushwake.com)

©2023 Cushman & Wakefield. All rights reserved. The information contained in this communication is strictly confidential. This information has been obtained from sources believed to be reliable but has not been verified. No warranty or representation, express or implied, is made as to the condition of the property (or properties) referenced herein or as to the accuracy or completeness of the information contained herein, and same is submitted subject to errors, omissions, change of price, rental or other conditions, withdrawal without notice, and to any special listing conditions imposed by the property owner(s). Any projections, opinions or estimates are subject to uncertainty and do not signify current or future property performance.

