

OFFICE PARK PATEWOOD

PATEWOOD 6

10 PATEWOOD DRIVE, GREENVILLE, SC 29615

SITE #1424



±2,349 SF TO ±28,619 SF AVAILABLE

CLASS A OFFICE PARK

Property Amenities Offered:

- » Weekly food trucks (3-5 times per week)
- » Tenant Lounge including café, games, workstations and massage chairs
- » State-of-the Art Fitness Center with locker rooms and showers
- » Car Detailing Services
- » Dry Cleaning Delivery
- » Free Notary Service
- » On-site parking 4/1,000 RSF
- » Lease Rate: \$26.50/RSF Full Service

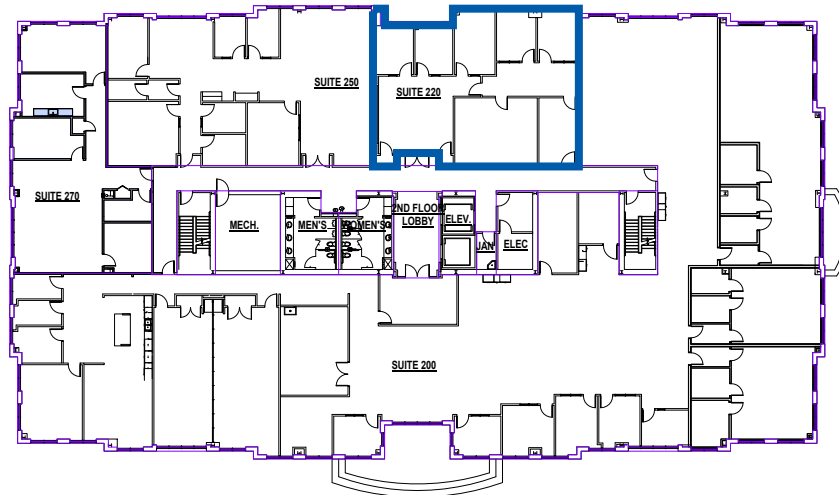


2ND FLOOR | ±2,349 SF

LEASING OPPORTUNITIES:

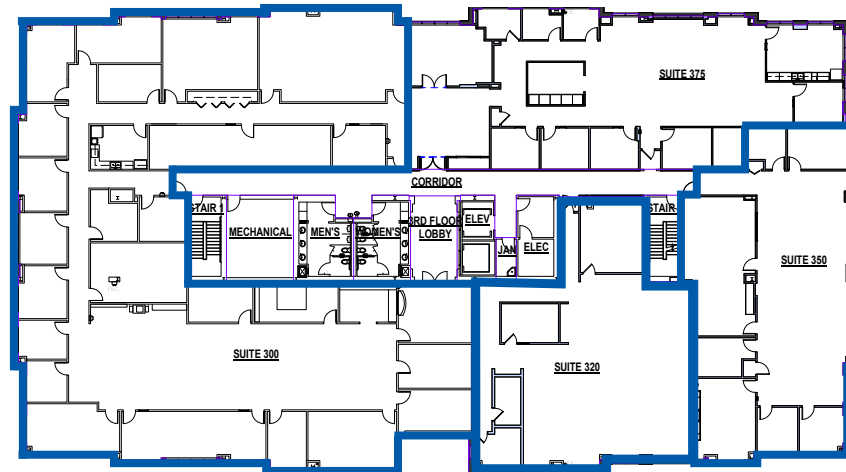
- ±2,349 SF | Suite 220
- ±11,160 SF | Suite 300
- ±3,365 SF | Suite 320
- ±3,597 SF | Suite 350
- ±8,148 SF | Suite 550

SUITE 220 | ±2,349 SF



3RD FLOOR | UP TO ±18,122 SF

SUITE 300
±11,160 SF

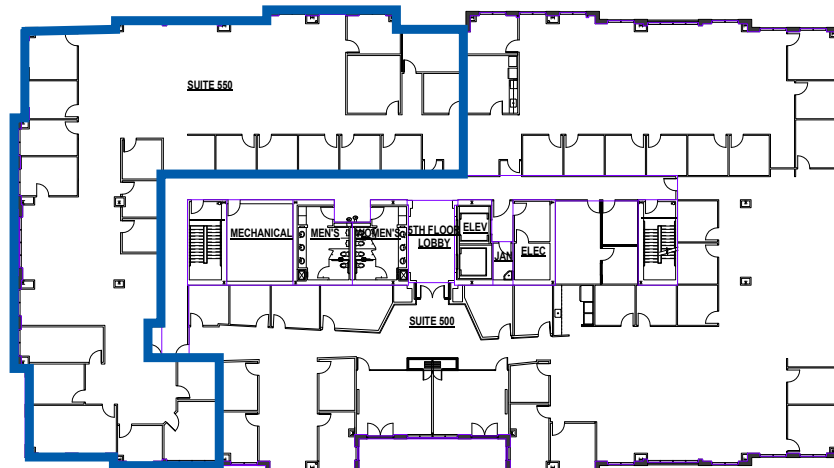


SUITE 350
±3,597 SF

SUITE 320 | ±3,365 SF

5TH FLOOR | ±8,148 SF

SUITE 550 | ±8,148 SF



OFFICE PARK PATEWOOD



LEASING TEAM

CHARLES GOUCH, CCIM, SIOR
Senior Vice President
+1 864 527 6035
charles.gouch@cbre.com

BLAINE HART, SIOR
Senior Vice President
+1 864 527 6054
blaine.hart@cbre.com

SHELBY DODSON, LEED AP
First Vice President
+1 864 527 6022
shelby.dodson@cbre.com

© 2023 CBRE, Inc. All rights reserved. This information has been obtained from sources believed reliable, but has not been verified for accuracy or completeness. Any projections, opinions, or estimates are subject to uncertainty. The information may not represent the current or future performance of the property. You and your advisors should conduct a careful, independent investigation of the property and verify all information. Any reliance on this information is solely at your own risk. CBRE and the CBRE logo are service marks of CBRE, Inc. and/or its affiliated or related companies in the United States and other countries. All other marks displayed on this document are the property of their respective owners. Photos herein are the property of their respective owners and use of these images without the express written consent of the owner is prohibited. PMStudio_June2018

CBRE