

Building A Leasing Now

# WILLIMON BUSINESS PARK

Distribution / Manufacturing / Warehouse  
Class A Industrial For Lease | Greenville, SC

Willimon Business Park consists of ±116 acres and two completed industrial buildings by developer Collett Industrial in the Greenville, SC market. Building B is fully leased by Thermo-King, with 224,640-SF Building A newly delivered and available now for immediate occupancy.

This location offers unmatched proximity to major interstate I-85 and the South Carolina Technology & Aviation Center(SCTAC), an established industrial district with corporate tenants like Michelin, Lockheed Martin and 3M only a few miles away.

Available

**NOW**

Building A

**±224K**

Square Feet



**John Montgomery, SIOR**  
Managing Director  
+1 864 527 5422  
john.montgomery@colliers.com

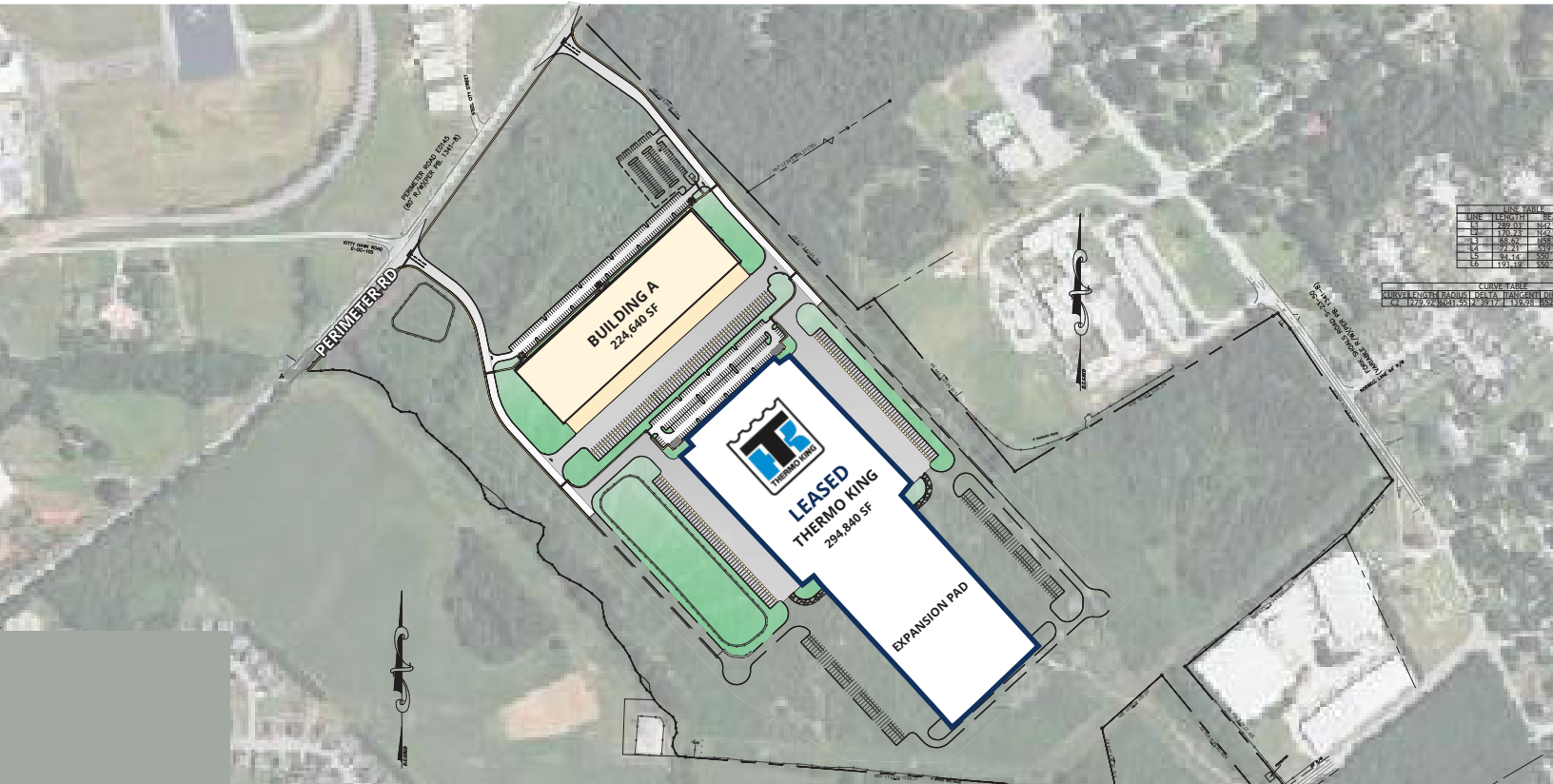
**Garrett Scott, SIOR**  
Managing Director  
+1 864 527 5453  
garrett.scott@colliers.com

**Brockton Hall, SIOR**  
Vice President  
+1 864 527 5441  
brockton.hall@colliers.com

**Dillon Swayngim, SIOR**  
Vice President  
+1 864 527 5456  
dillon.swayngim@colliers.com

# WILLIMON BUSINESS PARK

Collett  
INDUSTRIAL



## BUILDING SPECS

Building A | Available

Size	224,640 SF (subdivisible)	Dock Doors	48
Dimensions	864' x 260'	Clear Height	32'
Parking	175 Auto; 75 Trailer	Column Spacing	54' x 50' / 60' Speed Bay
Delivery	Feb 2023	Office	±2,500-SF spec office included
Zoning	I-1; Industrial	Fire Protection	ESFR
County	Greenville	Utilities	All on-site

**John Montgomery, SIOR**

Managing Director  
+1 864 527 5422

john.montgomery@colliers.com

**Garrett Scott, SIOR**

Managing Director  
+1 864 527 5453

garrett.scott@colliers.com

**Brockton Hall, SIOR**

Vice President  
+1 864 527 5441

brockton.hall@colliers.com

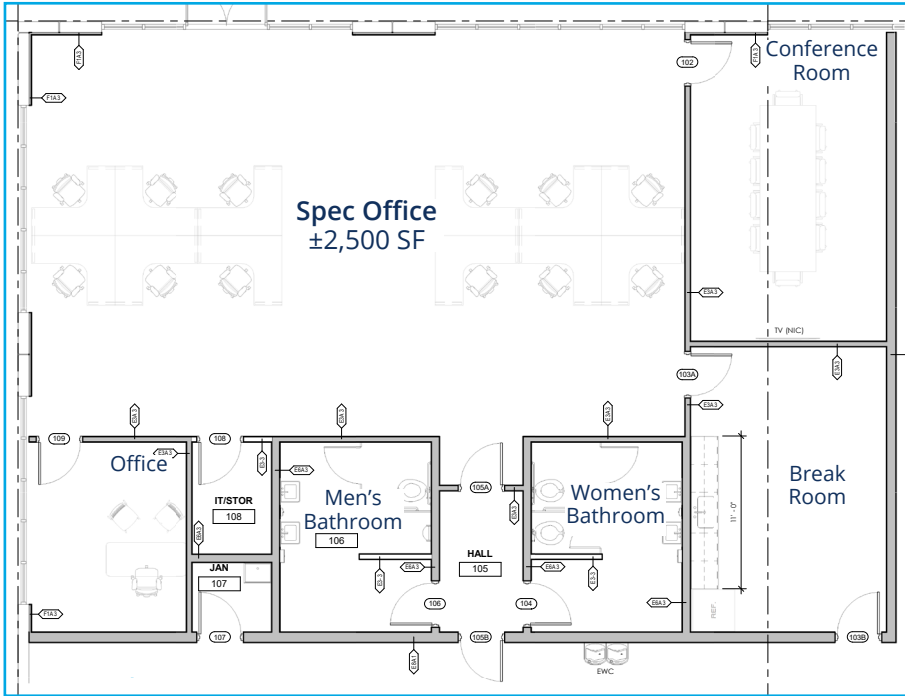
**Dillon Swayngim, SIOR**

Vice President  
+1 864 527 5456

dillon.swayngim@colliers.com

Colliers

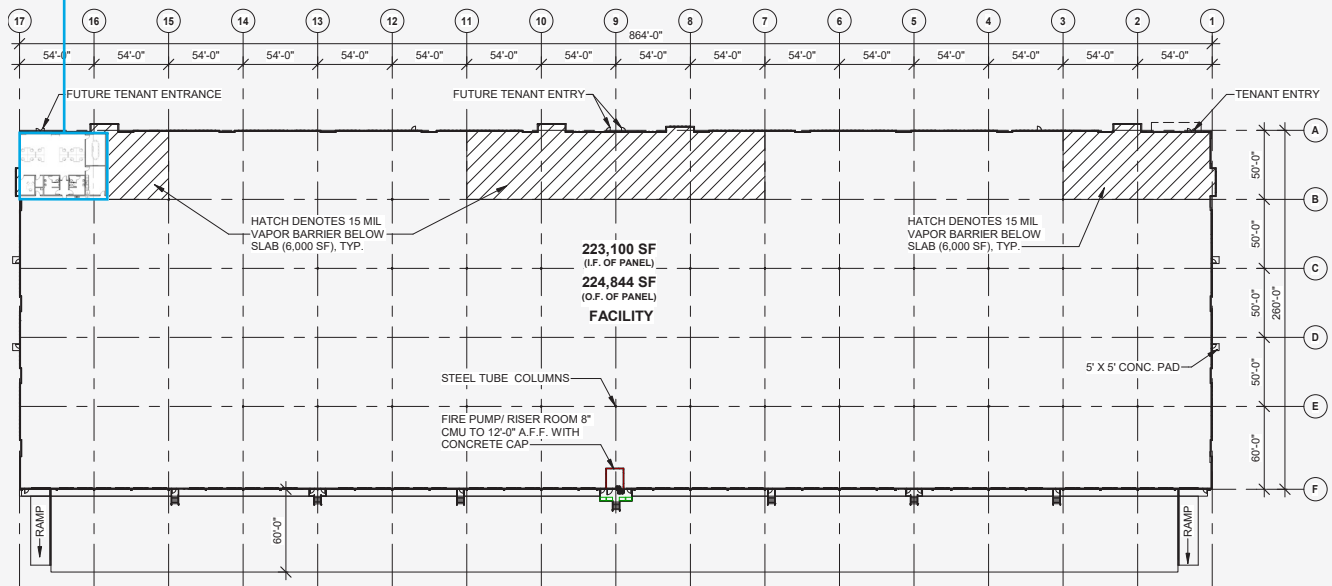
# WILLIMON BUSINESS PARK



## BUILDING A: FLOOR PLAN

Warehouse: ±222,140 SF

Speculative Office: ±2,500 SF



**John Montgomery, SIOR**

Managing Director  
+1 864 527 5422

john.montgomery@colliers.com

**Garrett Scott, SIOR**

Managing Director  
+1 864 527 5453

garrett.scott@colliers.com

**Brockton Hall, SIOR**

Vice President  
+1 864 527 5441

brockton.hall@colliers.com

**Dillon Swayngim, SIOR**

Vice President  
+1 864 527 5456

dillon.swayngim@colliers.com





# WILLIMON BUSINESS PARK



**John Montgomery, SIOR**  
Managing Director  
+1 864 527 5422  
[john.montgomery@colliers.com](mailto:john.montgomery@colliers.com)

**Garrett Scott, SIOR**  
Managing Director  
+1 864 527 5453  
[garrett.scott@colliers.com](mailto:garrett.scott@colliers.com)

**Brockton Hall, SIOR**  
Vice President  
+1 864 527 5441  
[brockton.hall@colliers.com](mailto:brockton.hall@colliers.com)

**Dillon Swayngim, SIOR**  
Vice President  
+1 864 527 5456  
[dillon.swayngim@colliers.com](mailto:dillon.swayngim@colliers.com)

# WILLIMON BUSINESS PARK

Collett  
INDUSTRIAL



## ABOUT THE SCTAC INDUSTRIAL CORRIDOR

The South Carolina Technology & Aviation Center is a unique, leading-edge business and technology airpark located in South Carolina, a top 10 pro-business state, and global breeding ground for innovative companies dedicated to advanced manufacturing, research, and innovation.

As a former Air Force base, SCTAC's 2,600 acres are now recognized as a major aircraft maintenance center and corporate park. The indirect effect of SCTAC companies on local and state economies in 2013 totaled 1,900+ employees, payroll of \$104.4 million, and \$333.4 million in economic output.



- 103 COMPANIES (99 GLOBAL)
- 2,600 ACRES
- AIRPORT WITH 8,000' RUNWAY
- EXCESS AIRCRAFT CAPACITY
- 4,100 EMPLOYEES

**John Montgomery, SIOR**  
Managing Director  
+1 864 527 5422  
john.montgomery@colliers.com

**Garrett Scott, SIOR**  
Managing Director  
+1 864 527 5453  
garrett.scott@colliers.com

**Brockton Hall, SIOR**  
Vice President  
+1 864 527 5441  
brockton.hall@colliers.com

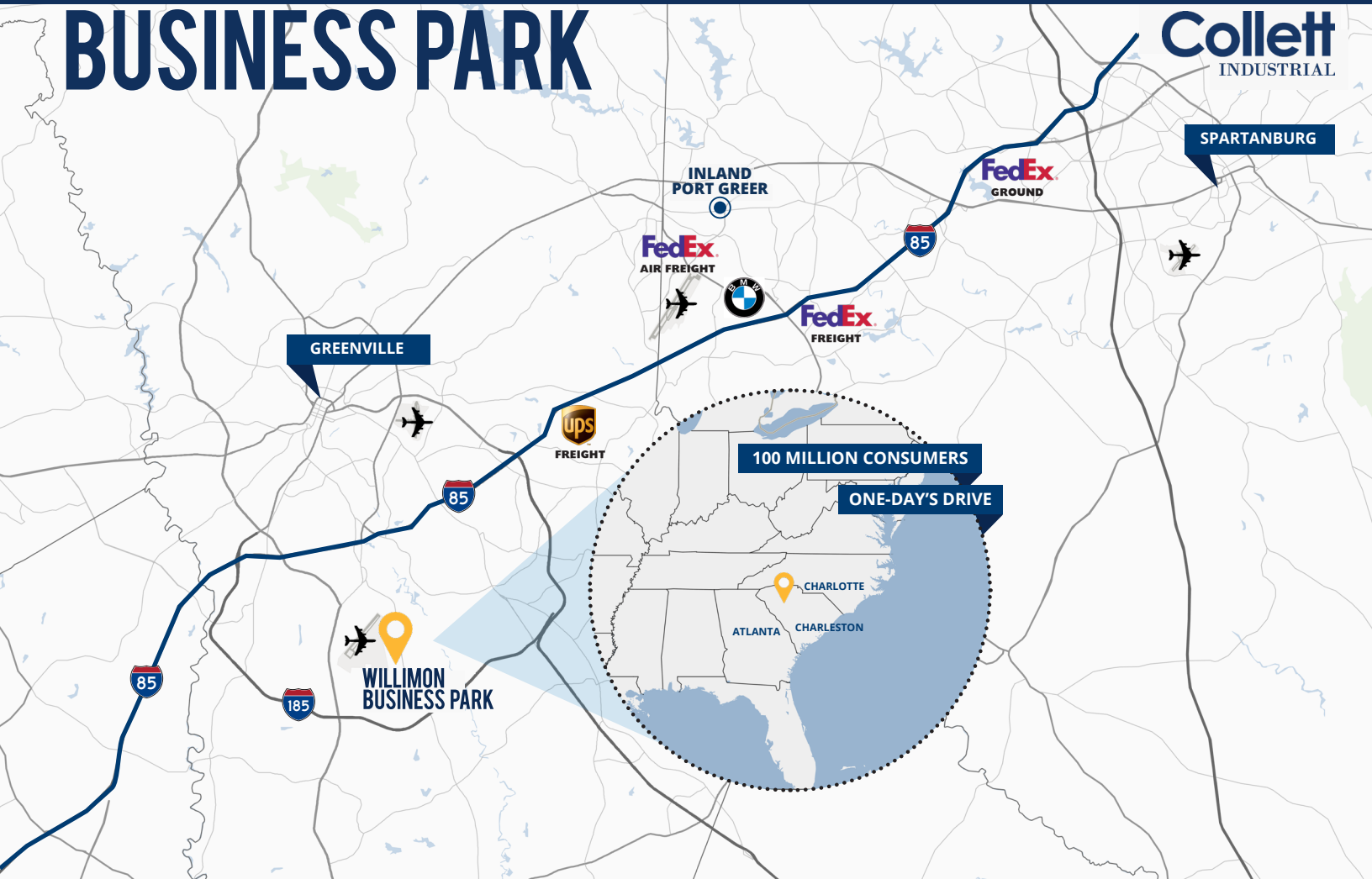
**Dillon Swayngim, SIOR**  
Vice President  
+1 864 527 5456  
dillon.swayngim@colliers.com



# WILLIMON BUSINESS PARK



**Collett**  
INDUSTRIAL



## GREENVILLE COUNTY, SC

Greenville, SC

**09**  
miles

GSP Airport

**16**  
miles

Inland Port

**21**  
miles

Atlanta, GA

**147**  
miles

Charlotte, NC

**106**  
miles

### Industrial Snapshot (5 miles)

Michelin	1.3 miles	Lockheed Martin	1.3 miles	Kimura	3.3 miles
Magna	2.5 miles	Solvay	2.8 miles	Wabtec	4.4 miles
3M	0.7 miles	GE Aviation	3.2 miles	Americold	1.6 miles

### Key Infrastructure

GSP Int'l Airport	16 miles	Port of Charleston	200 miles	FedEx Freight	20 miles
Inland Port Greer	21 miles	UPS Freight	15 miles	FedEx Air Freight	19 miles