



The Furman Co.

CBRE

CLASS A mixed-use/ADAPTIVE REUSE DEVELOPMENT

IN A
QUALIFIED
OPPORTUNITY
ZONE



Up to ±11,108 SF
Divisible



711 W WASHINGTON STREET, GREENVILLE, SC 29601

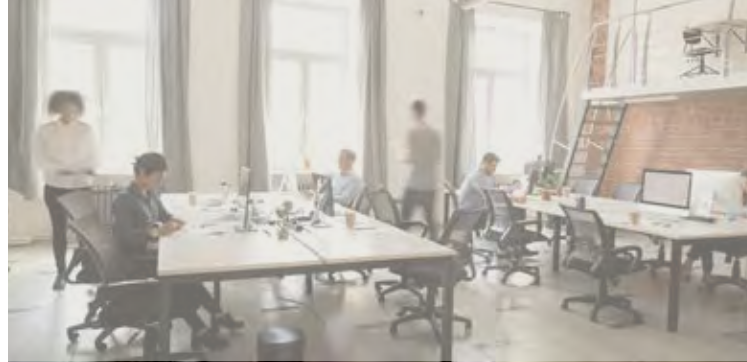
CLASS A mixed-use/ADAPTIVE REUSE development

Up to
±11,108 SF
Divisible



* The renderings are conceptual and subject to change.

PROPERTY FEATURES



Up to ±11,108 SF Available
+ Divisible to ±1,914 SF



Located on W Washington Street
backing up to the proposed Unity Park



Lease Rate: Contact Broker



125 on-site parking spaces



Space to be delivered Q2 2023



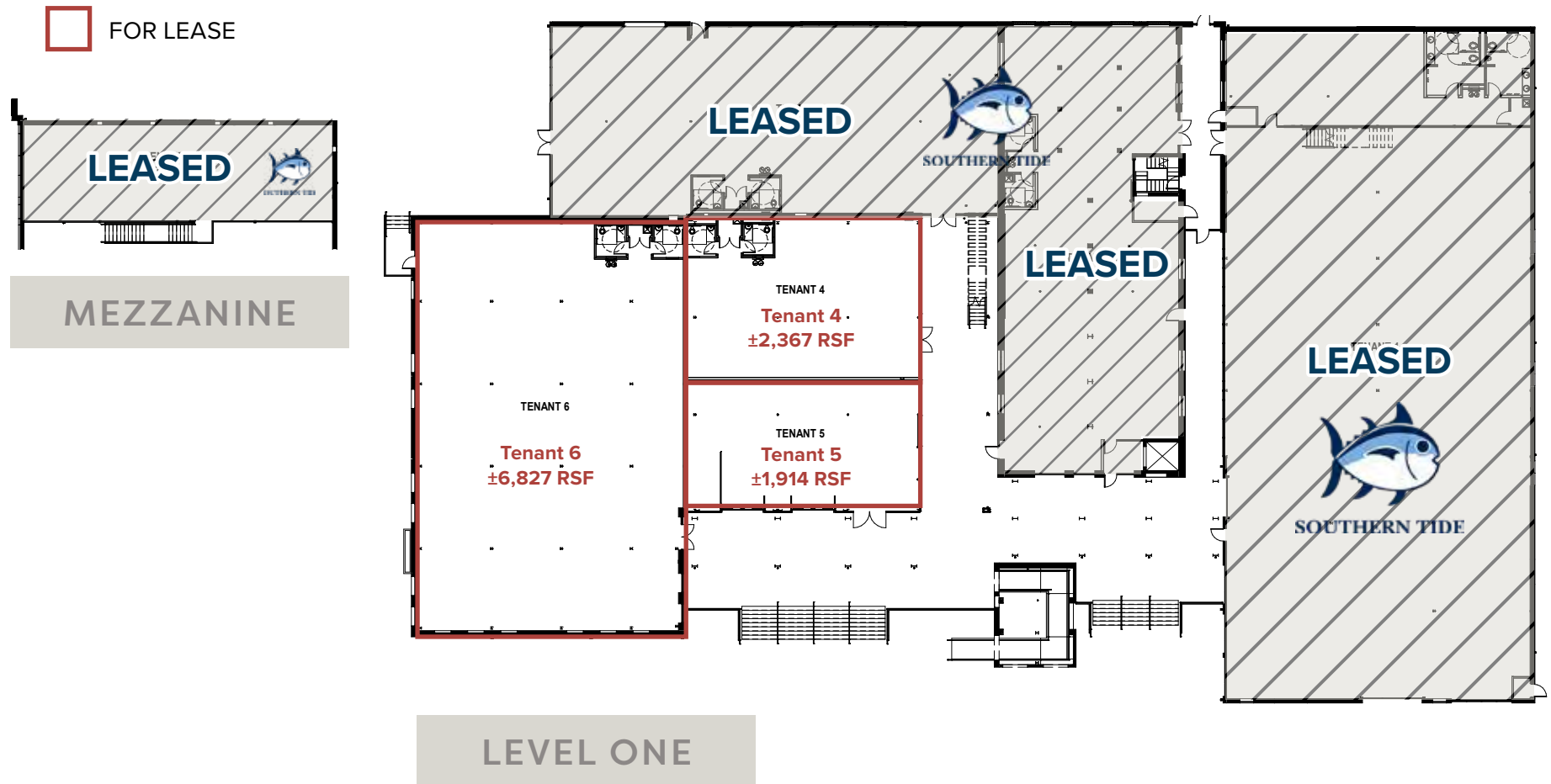
Located in an **Opportunity Zone***



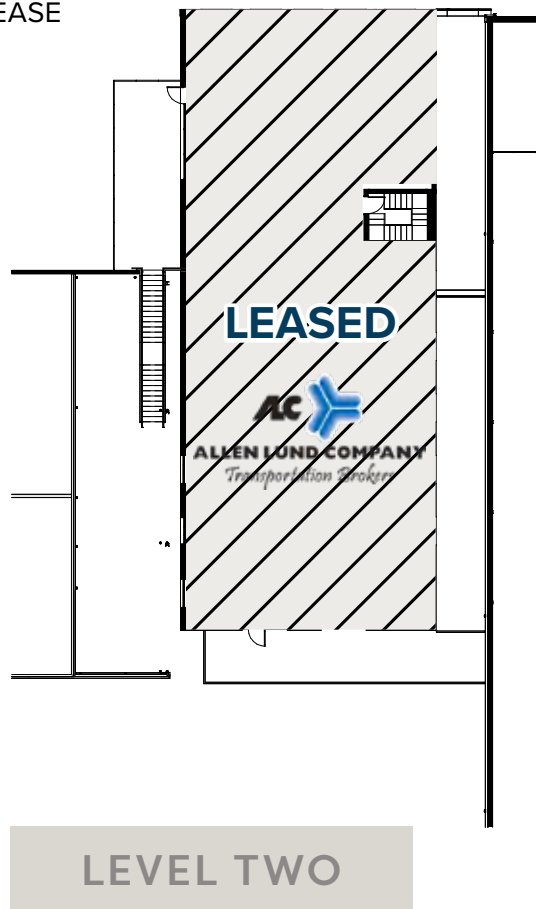
Signage opportunities available

***An Opportunity Zone** is a designation and investment program created by the Tax Cuts and Jobs Act of 2017 allowing for certain investments in lower income areas to have tax advantages.

PROPERTY FLOOR PLANS



 FOR LEASE



BORDEN RENDERINGS

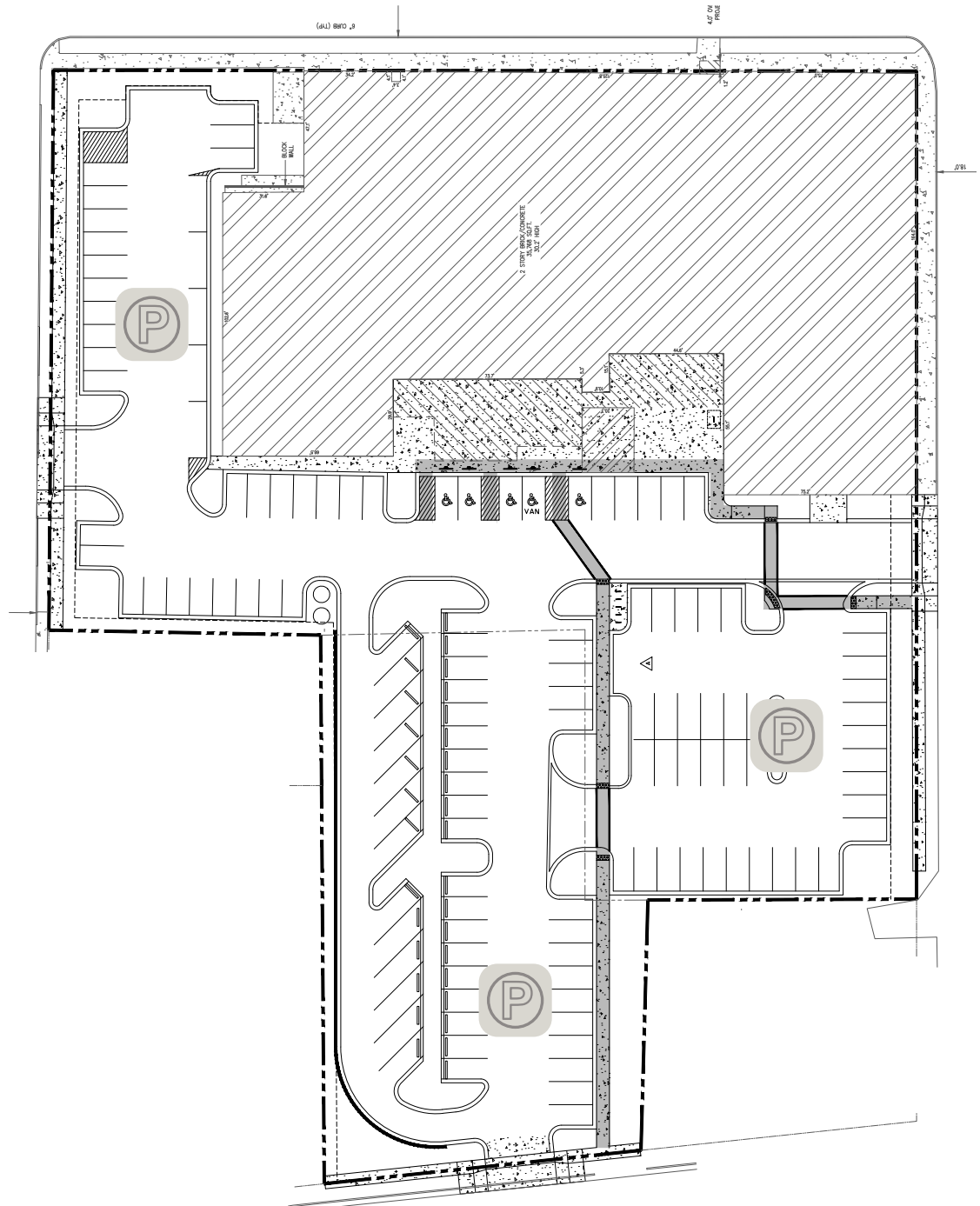


* The renderings are conceptual and subject to change.

SITE PLAN



Ample **onsite parking**
exclusive to the project
and **free of charge** to
occupants and guests.



FALLS
PARK
on the
Reedy

DOWNTOWN
GREENVILLE

Church Street

E North Street

Washington Street

S Main Street

N Main Street

Richardson Street

N Academy Street

Buncombe Street

in Avenue

Washington Street





Fluor Field

S Main Street

S Academy Street

Kroc Center

S Hudson Street

unity park

Academy



CLASS A mixed-use/ADAPTIVE REUSE DEVELOPMENT



BROKER
CONTACT

BLAINE HART, SIOR

SENIOR VICE PRESIDENT

+1 864 527 6054

blaine.hart@cbre.com