

# Access Point

±46,763 SF Available

370 Old Laurens Road, Suite 200  
Simpsonville, SC 29681  
Site #2329



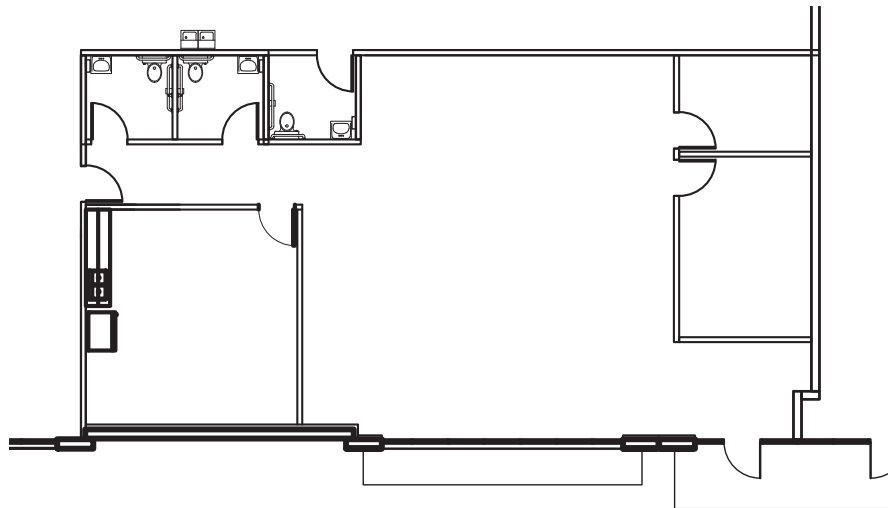
## Contact Us

**Trey Pennington, SIOR**  
Executive Vice President  
+1 864 293 9757  
[trey.pennington@cbre.com](mailto:trey.pennington@cbre.com)

**Jeff Benedict**  
Senior Associate  
+1 864 414 0641  
[jeff.benedict@cbre.com](mailto:jeff.benedict@cbre.com)

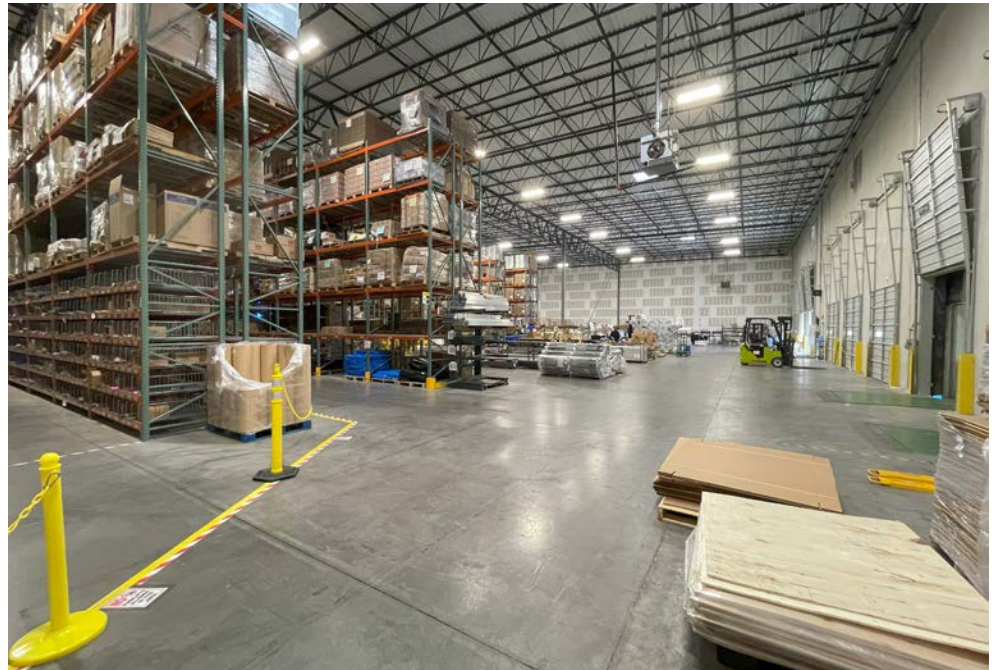
**Tripp Speaks**  
Associate  
+1 803 669 2434  
[tripp.speaks@cbre.com](mailto:tripp.speaks@cbre.com)

# Property Details

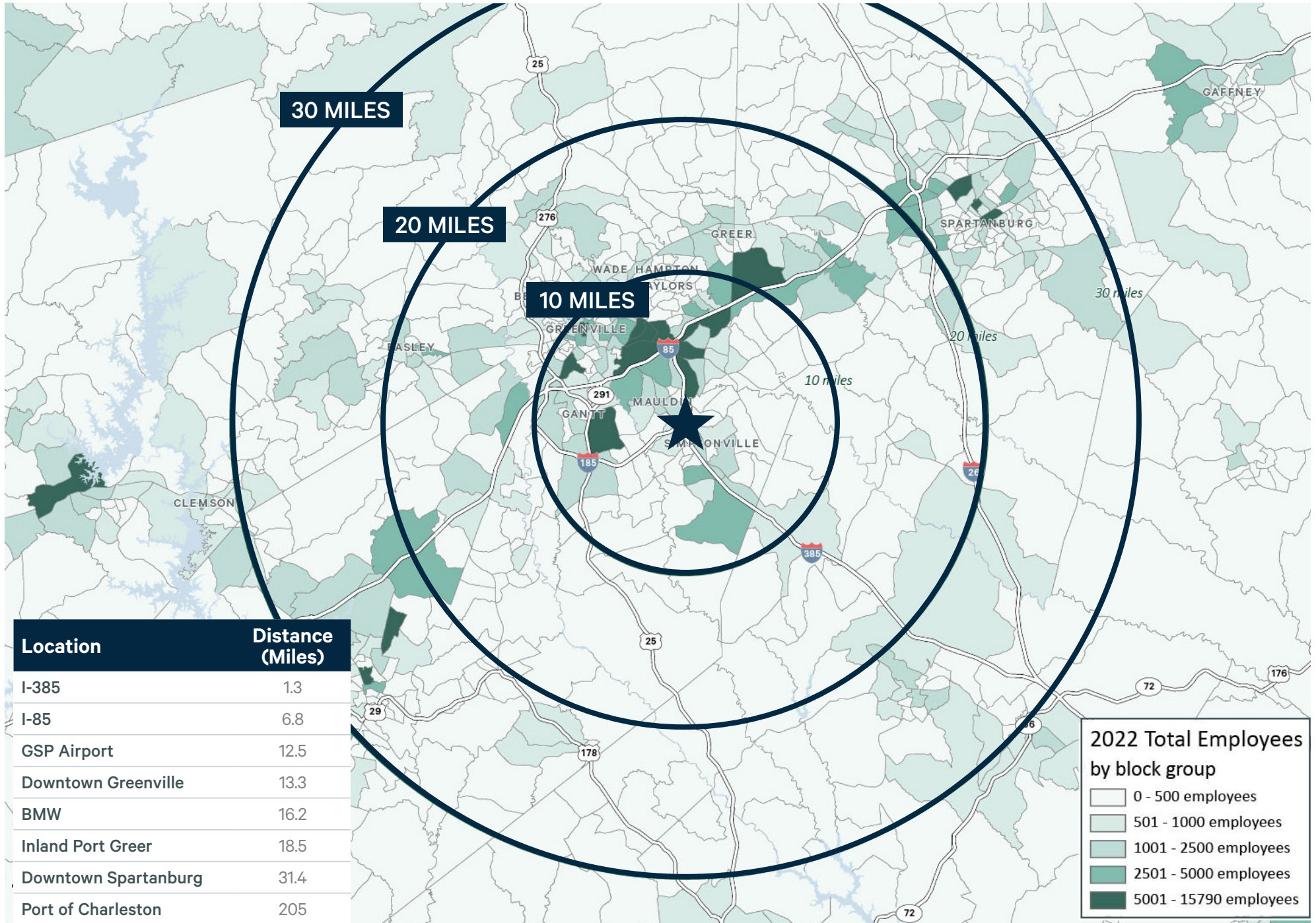


- + Available: ±46,763 SF
- + Total Building Size: ±155,938
- + Spec Office Space: ±2,000 SF
- + Building Dimensions: 260' x 600'
- + Column Spacing: 50' x 54'
- + Speed Bay: 60'
- + Clear Height: 32'
- + Dock Doors Available: 10 (9' x 10') - 2 w/ 35,000 lb levelers
- + Sprinkler: ESFR
- + Truck Court: 135' - 190'
- + Auto Parking: 119 Spaces
- + Trailer Parking: Available
- + Roof: 45 mil; R20 White TPO

# Property Details



# Location Map



# Location Map



# Drive Time Map



	Population	Businesses	Labor Force	Bachelor's degree or Higher	Avg HH Income	Daytime Population
<b>10 Miles</b>	351,919	14,384	181,003	70,857	\$110,671	412,272
<b>20 Miles</b>	779,365	25,118	386,198	128,110	\$97,753	791,809
<b>30 Miles</b>	1,205,550	38,224	579,732	175,669	\$90,778	1,223,952

© 2021 CBRE, Inc. All rights reserved. This information has been obtained from sources believed reliable, but has not been verified for accuracy or completeness. You should conduct a careful, independent investigation of the property and verify all information. Any reliance on this information is solely at your own risk. CBRE and the CBRE logo are service marks of CBRE, Inc. All other marks displayed on this document are the property of their respective owners, and the use of such logos does not imply any affiliation with or endorsement of CBRE. Photos herein are the property of their respective owners. Use of these images without the express written consent of the owner is prohibited.