

**AVISON
YOUNG**

For sale: Occupier warehouse/infill land



1505 BUNCOMBE ROAD | GREENVILLE, SOUTH CAROLINA

Rob Howell
Senior Vice President
C: +1 404 493 3904
rob.howell@avisonyoung.com

Reeves Willis
Associate
C: +1 864 608 2666
reeves.willis@avisonyoung.com

Gary Lyons
Principal
C: +1 919 323 0118
gary.lyons@avisonyoung.com



Scan or click here to view
our interactive brochure

Offering summary

Originally a bakery, this 39,000 sf masonry building is ideal for an owner-occupant looking for value-add warehouse or light manufacturing space near downtown Greenville. It is 2 blocks from the Swamp Rabbit Trail Orange Line and 1.25 mi from downtown Greenville. In addition, this property is located in an Opportunity Zone. The location, which includes a 2nd small office/warehouse building would also be an ideal location for apartment development.

PROPERTY INFORMATION

Address	1505 Buncombe Road
State	South Carolina
Zip code	29609
County	Greenville
Municipality	Greenville (outside city limits)
Parcel #1 0150000200101	±1.978 acres
Parcel #2 0150000200300	±0.57 acre
Total acreage	±2.548 acres
Zoning	FRD



2 parcels
available for sale
individually or combined



Offering summary



PROPERTY #1 INFORMATION

Price	\$1,980,000	Drive-in/dock doors	2
Tax ID	0150000200101	Heat/AC	100% / office only
Office	7,000 sf	Structure	Brick
Warehouse	32,000 sf	Utilities	Power: Duke Gas: PNG Water/sewer: GWS Fiber: Spectrum
Parking	±24 spaces		

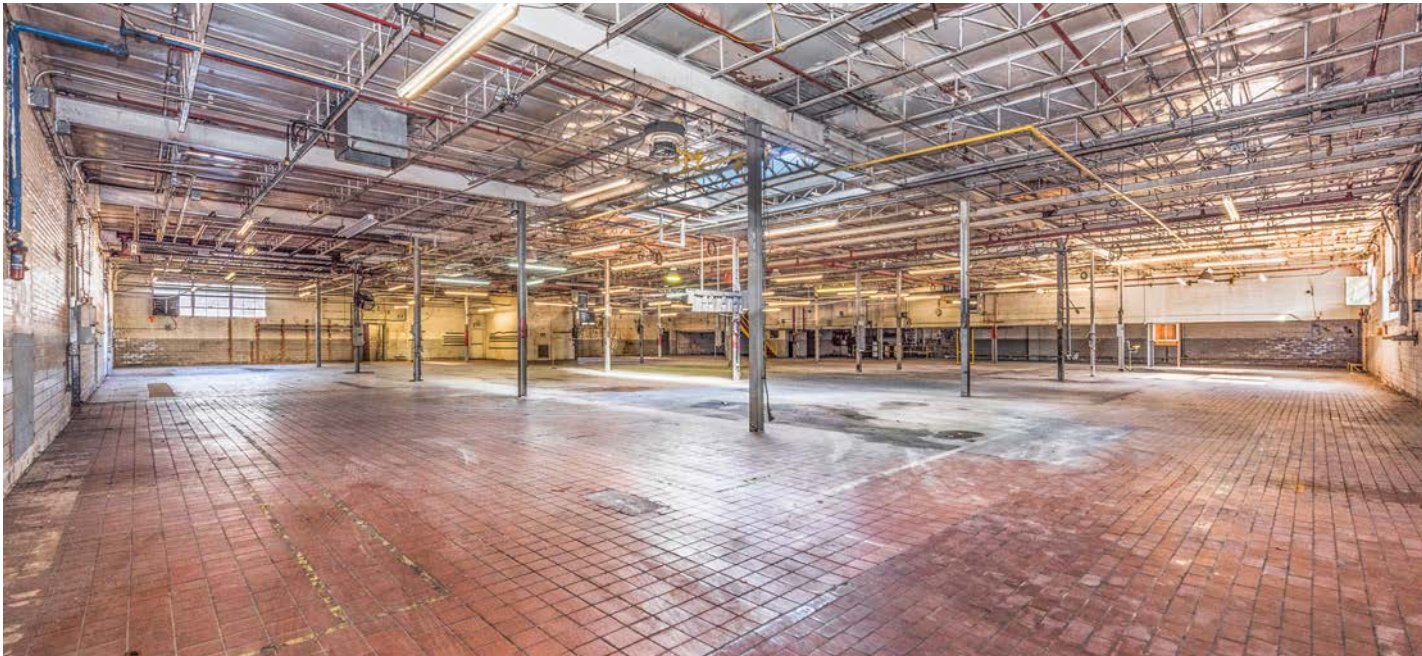
PROPERTY #2: INFORMATION

Price	\$496,000	Storage	1,760 sf
Tax ID	0150000200300	Parking	±10 spaces
Office	500 sf		

Office/showroom photos



Warehouse photos



Floor plan



LAYOUT & SQUARE FOOTAGE

	Office	±3,760 sf		Warehouse	±32,000 sf
	Showroom	±2,400 sf		Covered dock access	±1,320 sf

Demographics

KEY FACTS

1 mile

10,084

Population



Average Household Size

36.9

Median Age

\$40,789

Median Household Income

WORK FORCE

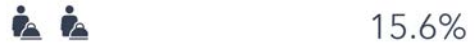
1 mile



White Collar



Blue Collar



Services

4.2%

Unemployment Rate

EDUCATION

1 mile

21%

No High School Diploma



29%

High School Graduate



17%

Some College



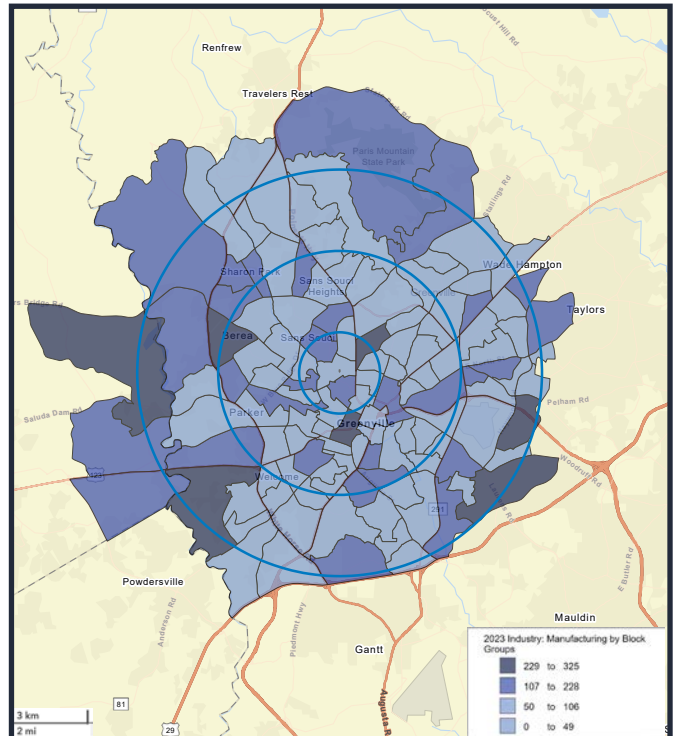
32%

Bachelor's/Grad/Pr of Degree



Scan or click here to view our interactive brochure

LOCAL MANUFACTURING DENSITY





Area map



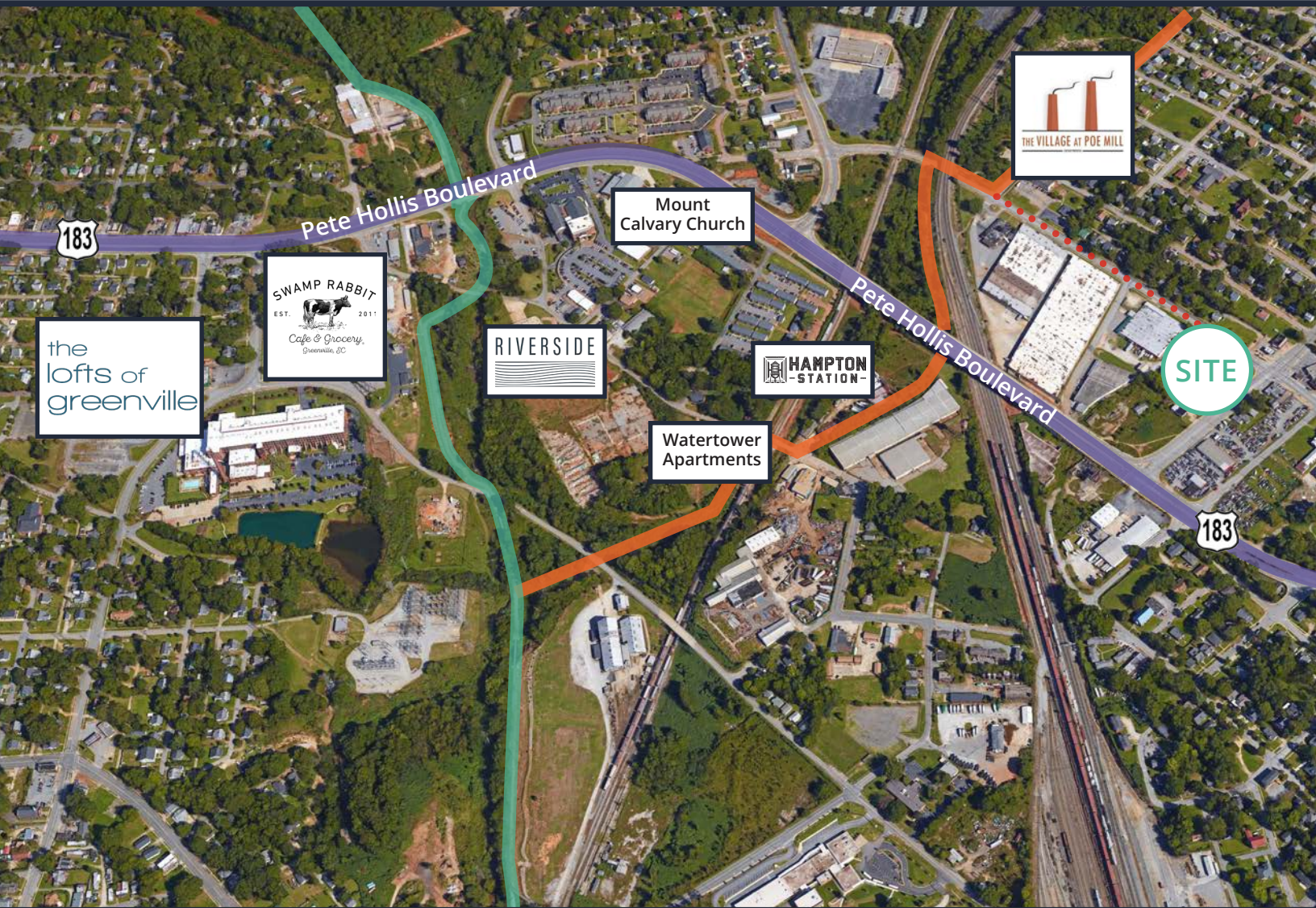
TRANSPORT DISTANCES

Interstate 385	2 miles
Interstate 185	4 miles
Interstate 85	6 miles
GSP International Airport	14.5 miles
Inland Port Terminal	16 miles
BMW Manufacturing	18 miles

MAJOR CITY DISTANCES

Columbia, SC	105 miles
Charlotte, NC	106 miles
Atlanta, GA	147 miles
Charleston, SC	215 miles
Savannah, GA	258 miles
Raleigh/Durham, NC	267 miles




Amenities



Swamp Rabbit Trail

Running along the scenic Reedy River, the 22-mile Prisma Health Swamp Rabbit Trail links the cities of Travelers Rest and Greenville in upstate South Carolina via a historic railroad corridor. Opened to the public in 2009, the trail has experienced continual growth and offers fun, non-motorized recreation and transportation opportunities throughout the Upstate. Usage rates recorded for 2022 were more than 700,000 people.

MAP KEY

-  Major roads (labeled)
-  Swamp Rabbit Trail – Orange Line
-  Swamp Rabbit Trail
-  Distance to Orange Line



Let's
talk.

For more information, contact:

Rob Howell
Senior Vice President
C: +1 404 493 3904
rob.howell@avisonyoung.com

Reeves Willis
Associate
C: +1 864 608 2666
reeves.willis@avisonyoung.com

Gary Lyons
Principal
C: +1 919 323 0118
gary.lyons@avisonyoung.com

