

108,240 SF Available

Adjacent to Downtown Greenville

Metts Street
Greenville, SC 29609
Site #1938

Excellent last mile location!



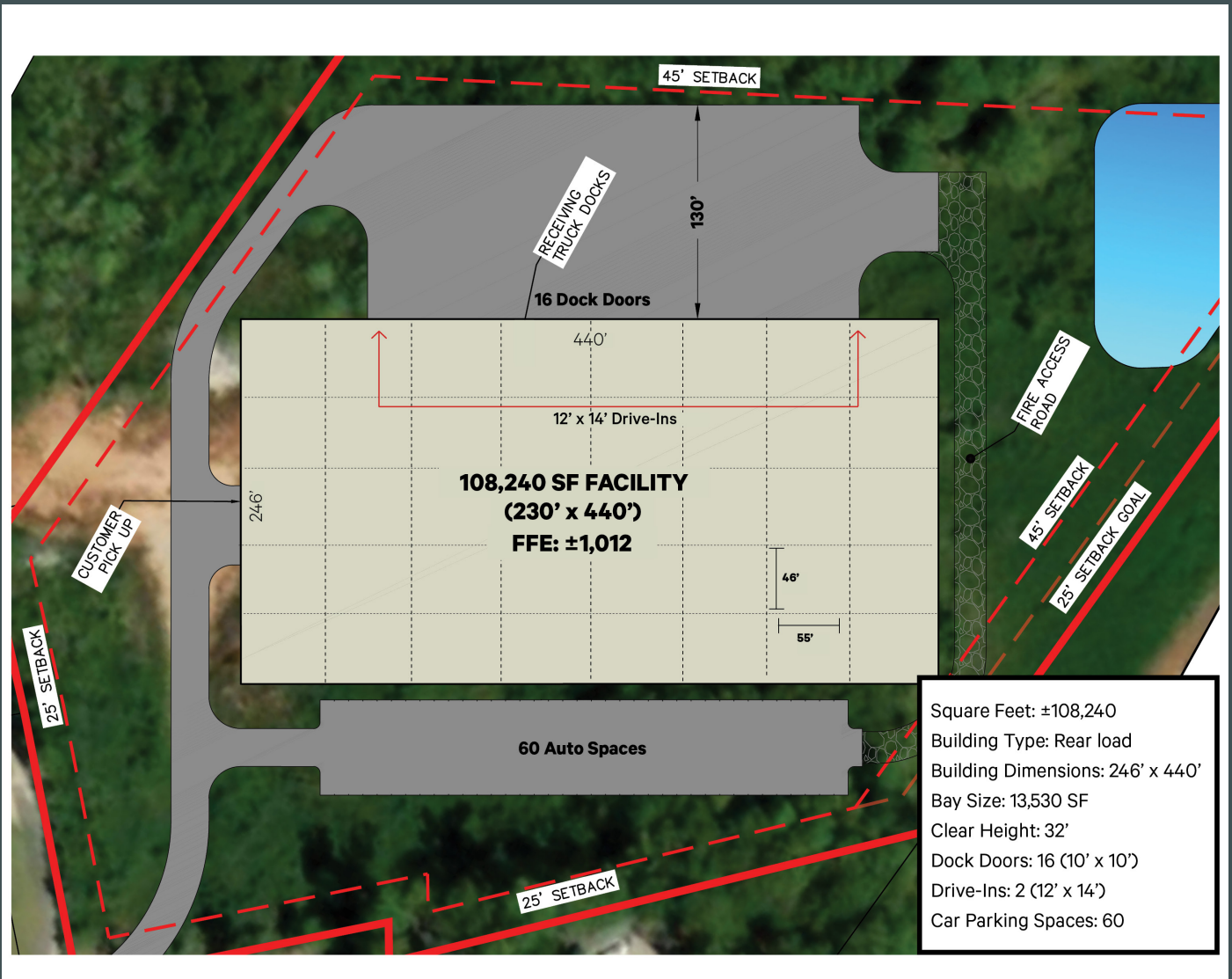
Contact Us

TREY PENNINGTON, SIOR
Senior Vice President
+1 864 527 6095
trey.pennington@cbre.com

JEFF BENEDICT
Associate
+1 864 235 1961
jeff.benedict@cbre.com

±108,240 SF Available

Metts Street | Greenville, SC 29609



Property Details

- + Size: ±108,240 SF
- + Acre: ±8.59
- + Rear Load
- + Tilt-up concrete panels
- + Column Spacing: 55' x 46'
- + Bay Size: 13,530 SF each
- + Light Industrial Zoning
- + Building Depth: 246'
- + Truck Court Depth: 135'
- + Sprinkler: ESFR
- + 3 Phase Power
- + Auto Spaces: 60
- + 36,900 VPD on Poinsett Highway
- + Utilities:
 - Power: Duke Energy
 - Gas: Piedmont Natural Gas
 - Water: Greenville Water System
 - Sewer: Parker Sewer & Fire

32'

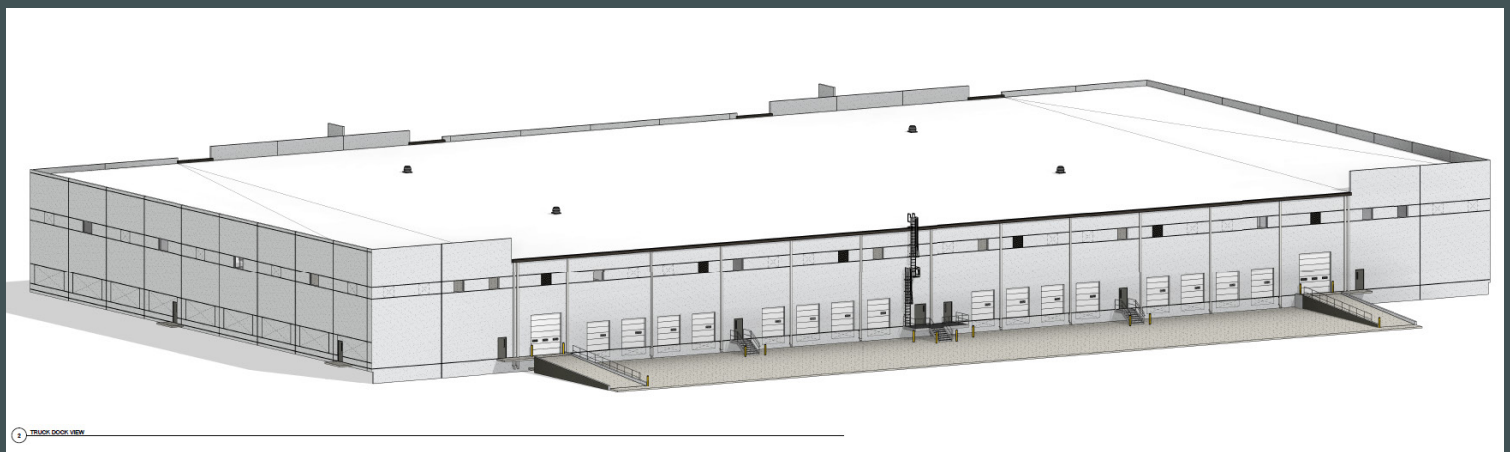
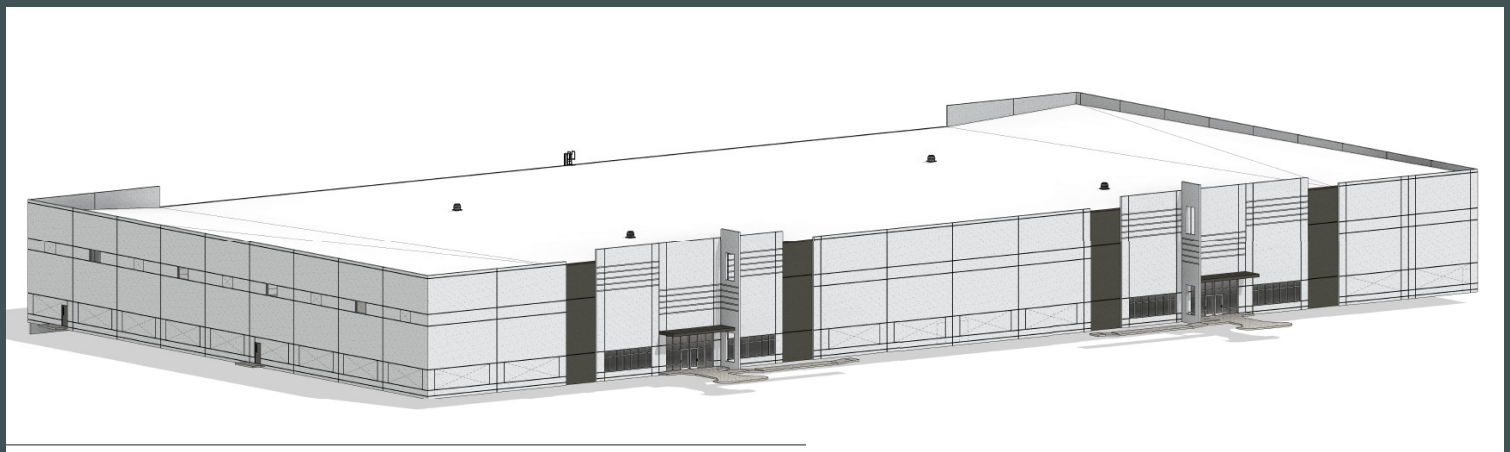
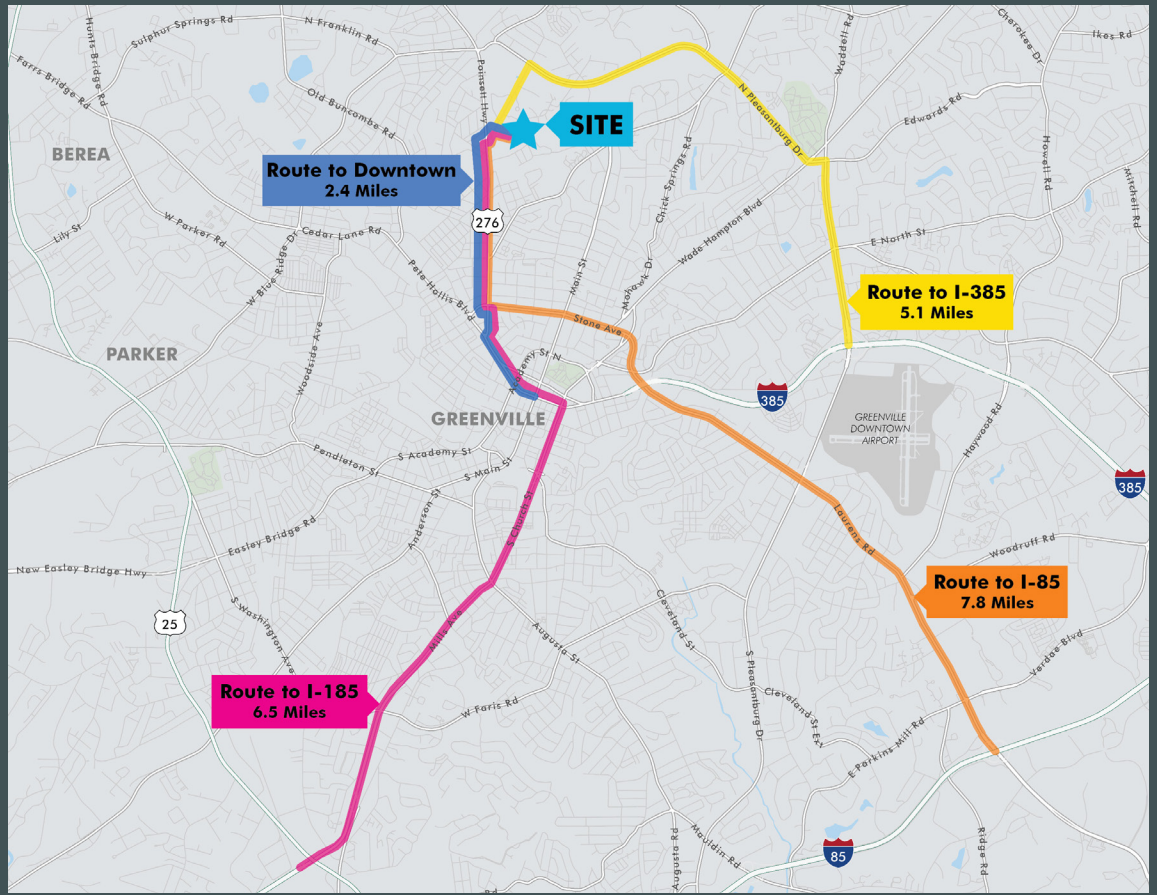
Clear Height

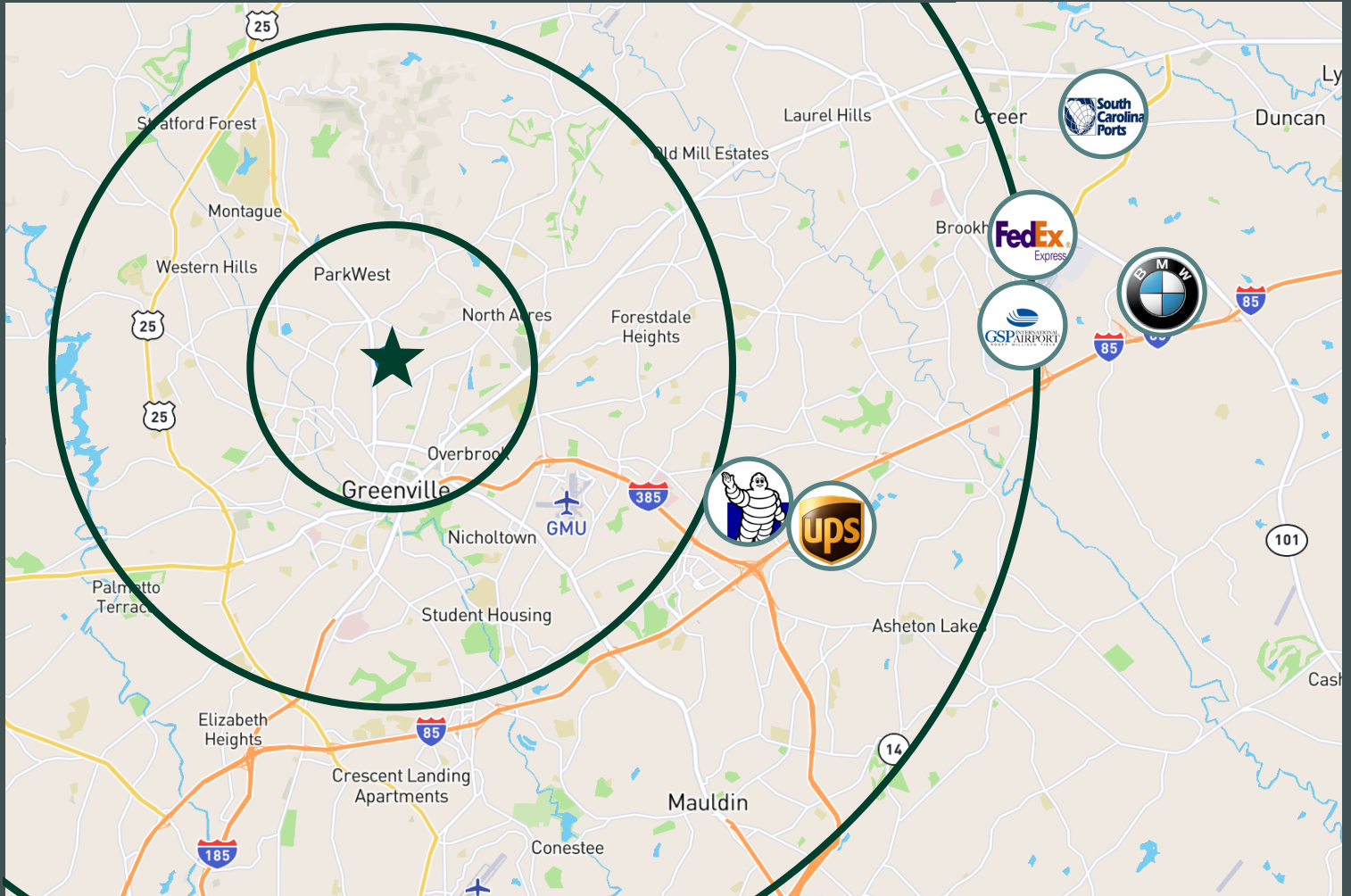
16

Dock Doors

2

Drive-In Doors





Location Details

- Downtown Greenville: 2.4 Miles
- UPS Freight: 13.7 Miles
- SC Inland Port: 13.9 Miles
- GSP Airport: 14.1 Miles
- FedEx Ship Center: 14.1 Miles
- BMW: 16.3 Miles
- Downtown Spartanburg: 33.8 Miles

	3 MILES	5 MILES	10 MILES
POPULATION	73,469	159,682	382,234
DAYTIME POPULATION	91,605	191,867	432,693
AVERAGE HH INCOME	\$75,562	\$78,346	\$85,211
LABOR FORCE	36,840	81,393	197,249
BACHELOR'S DEGREE OR HIGHER	10,841	24,565	62,289
BUSINESSES	4,271	8,271	16,332

© 2021 CBRE, Inc. All rights reserved. This information has been obtained from sources believed reliable, but has not been verified for accuracy or completeness. You should conduct a careful, independent investigation of the property and verify all information. Any reliance on this information is solely at your own risk. CBRE and the CBRE logo are service marks of CBRE, Inc. All other marks displayed on this document are the property of their respective owners, and the use of such logos does not imply any affiliation with or endorsement of CBRE. Photos herein are the property of their respective owners. Use of these images without the express written consent of the owner is prohibited.