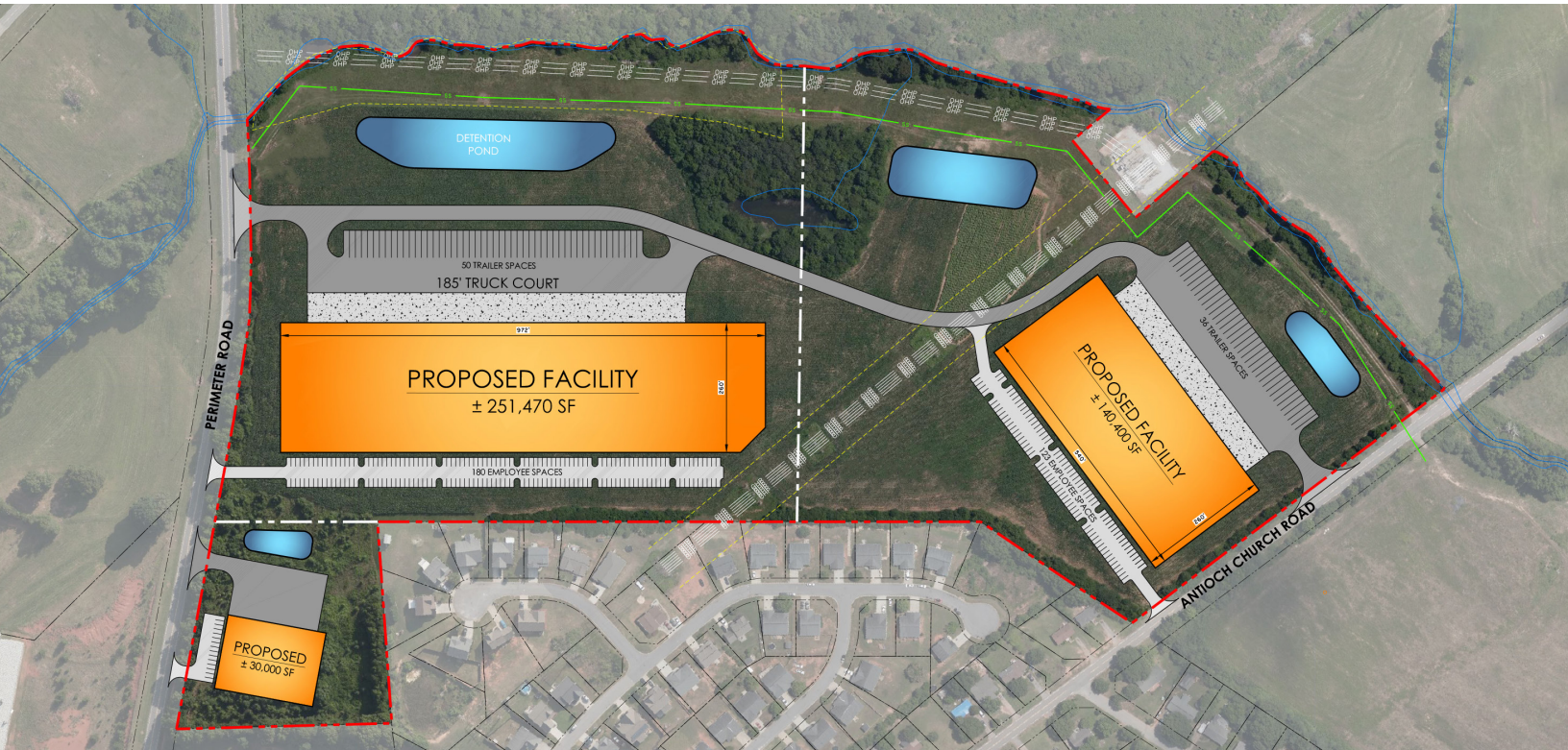




FOR SALE
LAND | ±49.4 AC
PERIMETER RD, GREENVILLE, SC 29605

LEE & ASSOCIATES
 COMMERCIAL REAL ESTATE SERVICES



EXCELLENT INDUSTRIAL DEVELOPMENT OPPORTUNITY

PROPERTY FEATURES

- Located in an Opportunity Zone
- 16" Water Line on Antioch Church Rd
- 12" Water Line 675' from Perimeter Rd
- 8" Water Line 500' from Perimeter Rd
- 20" Gravity Sewer Line on Property
- Zoned I-1 (Industrial)
- Gas Lines are 1,500' from the Site
- 12,470 Volts Available at the Site
- 3 Buildings Totaling 421,870 SF (Concept)



DISTANCE TRACKER

I-85: ±4.0 MILES
 I-385: ±6.0 MILES
 I-26: ±29.0 MILES
 Donaldson Center Airport: ±2.0 MILES

PERIMETER RD
 GREENVILLE, SC 29605
ASKING PRICE: \$2,791,100 (\$56,500 / AC)

Randall Bentley, CCIM, SIOR
 President / Principal
 rbentley@lee-associates.com

Kevin Bentley, SIOR
 Exec. V.P. / Principal
 kbentley@lee-associates.com

Chad Stepp
 Senior Associate
 cstepp@lee-associates.com

All information furnished regarding property for sale, rental, or financing is from sources deemed reliable, but no warranty or representation is made to the accuracy thereof and same is submitted to errors, omissions, change of price, rental or other conditions prior to sale, lease, or financing or withdrawal without notice. No liability of any kind is to be imposed on the broker herein.



PROPERTY DETAILS

ACREAGE: ±49.4 AC Acres
ZONING: I-1; Industrial
COUNTY: Greenville

CITY LIMITS: No
TAX MAP#: 0593030100404
OPPORTUNITY ZONE: Yes



Randall Bentley, CCIM, SIOR
President / Principal
rbentley@lee-associates.com

Kevin Bentley, SIOR
Exec. V.P. / Principal
kbentley@lee-associates.com

Chad Stepp
Senior Associate
cstepp@lee-associates.com

All information furnished regarding property for sale, rental, or financing is from sources deemed reliable, but no warranty or representation is made to the accuracy thereof and same is submitted to errors, omissions, change of price, rental or other conditions prior to sale, lease, or financing or withdrawal without notice. No liability of any kind is to be imposed on the broker herein.